

INNOVATING SINCE 1988



FlowTite®

Product Catalog

RELIABLE CONNECTIONS



PROUDLY MADE IN THE USA



The pioneer of polymer valve technology, ACCOR® Technology, started the push-fit revolution in 1988 and is still leading it today. With the proven reliability and superior gripping power of FLOWTITE® Technology at the core of the complete home plumbing FLOWTITE® Connect System, ACCOR® Technology engineers continue to innovate. When every connection counts, you can see why the pros trust the push-fit leader.



FLOWTITE® PRODUCT DIRECTORY

RELIABLE CONNECTIONS

FlowTite 1/2 inch Angle Stop Valve Only	pg. 10
FlowTite 1/2 inch Crimp Supply Stop Valve On	pg. 10 -11
FlowTite 1/2 inch Expansion Supply Stop Valve On	pg. 11
FlowTite Faucet Supply Kit	pg. 13
FlowTite Faucet Crimp Supply Kit	pg. 14
FlowTite Faucet Expansion Supply Kit	pg. 15
FlowTite Faucet Supply Kit	pg. 16
Faucet Supply Kits for Copper/Chrome Drop Faucets or Track Packs.....	pg. 16
Faucet Supply Kits for Delta & Other Faucets -Factory Attached Connectors.....	pg. 17
FlowTite Faucet Crimp Supply Stop Valve.....	pg. 18
FlowTite Faucet Expansion Supply Stop Valve.....	pg. 18
FlowTite Toilet Supply Kit.....	pg. 19
FlowTite Toilet Crimp Supply Kit.....	pg. 20
FlowTite Toilet Expansion Supply Kit.....	pg. 20
FlowTite Dishwasher Supply Stop -Elbow.....	pg. 21
FlowTite Dishwasher Supply Stop	pg. 21
FlowTite Dishwasher Crimp Supply Stop	pg. 22
FlowTite Dishwasher Expansion Supply Stop	pg. 23
FlowTite Dishwasher/Ice Maker Dual Application Supply Kit	pg. 24
FlowTite Dishwasher/Ice Maker Dual Application Crimp Supply Kit	pg. 24
FlowTite Dishwasher/Ice Maker Dual Application Expansion Supply Kit	pg. 25
FlowTite Ice Maker Supply Kit	pg. 25
FlowTite Arrestor Manifold Tee	pg. 26
FlowTite Dishwasher Arrestor Supply Kit W/O Elbow	pg. 26
FlowTite Dishwasher Arrestor Crimp Supply Kit W/O Elbow	pg. 26

FLOWTITE® PRODUCT DIRECTORY

RELIABLE CONNECTIONS

FlowTite Dishwasher Arrestor Expansion Supply Kit W/O Elbow	pg. 27
FlowTite Dishwasher Arrestor Supply Kit	pg. 27
FlowTite Faucet Supply Connectors.....	pg. 28-29-30
FlowTite Toilet Supply Connectors.....	pg. 31
FlowTite Dishwasher Supply Connectors.....	pg. 32-33
FlowTite Ice Maker & Filter Supply Connectors.....	pg. 33
FlowTite One Piece Couplings.....	pg. 34
FlowTite One Piece Coupling-Stop Valve.....	pg. 35
FlowTite One Piece Pipe Repair or Test Kit.....	pg. 35
FlowTite 4ALL Washing Machine Box-Valve Only.....	pg. 37
FlowTite 4ALL Washing Machine Box-Arrestor.....	pg. 38
FlowTite 4ALL Washing Machine Box-Arrestor Dual Single Drain.....	pg. 38
FlowTite 4ALL Washing Machine Box-Valve Only Dual Single Drain.....	pg. 39
FlowTite 4ALL Washing Machine Box- Dual Box Arrestor.....	pg. 39
FlowTite 4ALL Washing Machine Box- Dual Box Valve Only.....	pg. 40
FlowTite 4ALL Washing Machine Box- Rehau Pipe.....	pg. 40
FlowTite Water Softener Discharge Funnel-Rehau.....	pg. 40
FlowTite 4ALL Ice Maker Box- Valve Only.....	pg. 41
FlowTite 4ALL Ice Maker Box- 84" PVC Connector.....	pg. 41
FlowTite 4ALL Ice Maker Box- Valve Only Arrestor.....	pg. 41
FlowTite 4ALL Ice Maker Box Valve- 84" PVC Connector.....	pg. 42
FlowTite 4ALL Ice Maker Box Valve- 6" PVC Connector.....	pg. 42
FlowTite 4ALL Ice Maker Box- Valve Only-Rehau Pipe.....	pg. 42
FlowTite Round Ice Maker Box.....	pg. 43
FlowTite Round Ice Maker Box- Valve -CPVC.....	pg. 44
FlowTite Round Ice Maker Box- Valve -PEX Crimp.....	pg. 45
FlowTite 4ALL Fire Rated Washing Machine Box.....	pg. 46
FlowTite 4ALL Fire Rated Ice Maker Box.....	pg. 47
FlowTite REPAIR Series 1/2 inch Supply Stop Valves.....	pg. 49-50
FlowTite Air Admittance Valves.....	pg. 50
FlowTite Accessories.....	pg. 51

NEW

PART OF THE *FlowTite*® CONNECT SYSTEM

ACCOR®
TECHNOLOGY

FR BOX™



SEALED IN-BOX VALVE -TO-PIPE CONNECTIONS

PRE-INSTALLED FIRE RATED PAD

The one & two hour fire rated pad is conveniently located inside the box, so the Listings and Approvals are visible before and after installation.

IN-BOX CONNECTIONS

Eliminates costly water damage from hidden in-wall leaky valves.

PRE-INSTALLED FLOW-TITE VALVES

With superior gripping power of proven, patented FLOW-TITE® Technology inside.

JOB-SITE ADAPTABILITY

Intelligent design adapts to various job installation requirements with three way mounting.

WASHING MACHINE BOX

Washing machine outlet box configurations include arresters, condensation funnels and water softener funnels.

ICE MAKER BOX

One-Piece ice maker outlet box comes with factory attached 84" flexible connector.

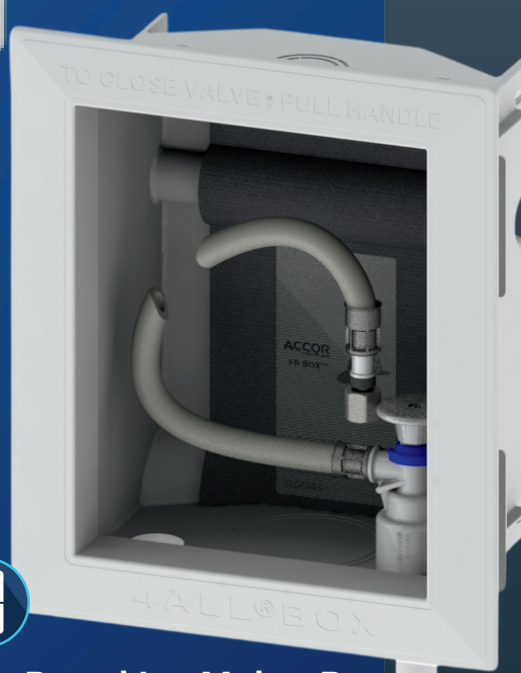
Fire Rated Washing Machine Box



**DESIGNED & BUILT
TO
PREVENT THE
SPREAD
OF FIRE & IN-WALL
LEAKS**



Fire Rated Ice Maker Box



FlowTite® CONNECT SYSTEM

ONE-PIECE SUPPLY STOPS

Engineered to eliminate potential joint leaks and provide faster job-site times with pre-ordered One-Piece options for fast tool-free installations. One valve works on PEX, Copper, and CPVC. Polymer or Metal. Push-fit, Crimp or Expansion.

OUTLET BOXES

Valve-to-pipe connections fully sealed in box eliminates potential in-wall water damage and costly repairs. Intelligent design adapts to various job installation requirements.

PIPE FITTINGS

Transition between all types of pipes, PEX, Copper, and CPVC. Built with trusted Flowguard Gold® construction and the proven reliability of FLOWTITE® Technology inside for fast tool free installations.

COMPRESSION VALVE REPLACEMENT

Compression supply stop replacement without removal of old brass ferrule and in-wall repairs. One valve works on Copper and CPVC. Engineered to eliminate potential joint leaks and provide faster job-site times.



Built on the proven reliability, non-corrosive and superior grip strength of FLOWTITE® Technology.





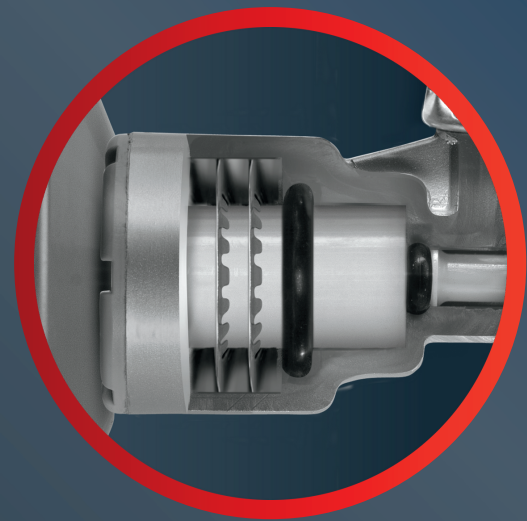
PIPE-TO-FIXTURE CONNECTION SYSTEM

FUTURE-READY ENGINEERING

Engineered with the future in mind, the FLOWTITE® Connect System is designed to provide a single-source, pipe-to-fixture connection solution that safeguards the life-span integrity of home plumbing systems. In anticipation of what tomorrow brings, from new installations, renovations, fixture upgrades, maintenance, and connecting old pipe to new pipe – the FLOWTITE® Connect System is the best choice for builders, remodelers and service plumbers.






PROVEN RELIABLE

The entire FLOWTITE® Connect System is built on the proven reliability, non-corrosive and superior grip strength of FLOWTITE® Technology inside. The solution combines the time-saving innovation of FLOWTITE® One-Piece Supply Stops with the game-changing adaptability of the all new FLOWTITE® Pipe Fittings. FLOWTITE® Connect System's future-ready plumbing provides the highest level of complete system reliability, job-site adaptability and consistently faster installation times through every phase of the home's plumbing system lifetime.



FLOWTITE® TECHNOLOGY INSIDE

Established in 1988, FLOWTITE® Technology is inside over 50 million valves installed in new homes. The proven reliability and superior gripping power of FLOWTITE® Technology is at the core of the intelligent plumbing products that make up the FLOWTITE® Connect System. Trusted by the pros and engineered throughout to improve job-site efficiencies and reduce liabilities.

-  **INNOVATIVE TECHNOLOGY**
Innovative, common-sense solutions plumbing pros demand.
-  **MADE IN THE USA**
Made with pride and top quality control in Washington State.
-  **STATE-OF-ART AUTOMATION**
The toughest inline testing standards in the industry.
-  **BEST WARRANTY IN THE INDUSTRY**
Proven reliability backed by 10-year warranty.
-  **OVER 50 MILLION INSTALLS**
Trusted by pros. Over 50 million valves installed in new homes.

FlowTite® CONNECT SYSTEM

FLOWTITE® ONE-PIECE SUPPLY STOPS

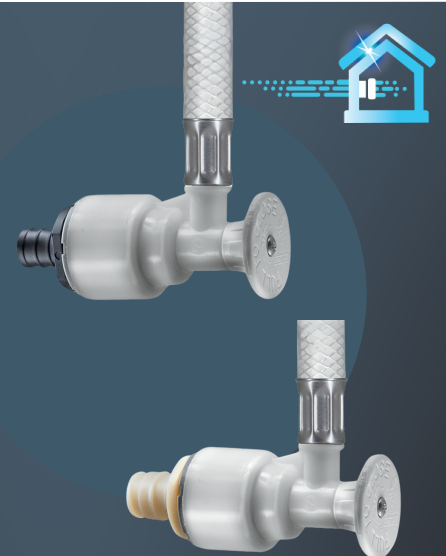
ENGINEERED
TO
ELIMINATE
POTENTIAL
JOINT LEAKS



FLOWTITE® ONE-PIECE SUPPLY STOPS

EXPANSION & CRIMP

ENGINEERED TO
ELIMINATE
UNSIGHTLY LONG
PEX STUB-OUTS



ONE-PIECE SUPPLY STOPS

ELIMINATES POTENTIAL JOINT LEAKS

The FLOWTITE® One-Piece Supply Stop is engineered to eliminate potential joint leaks with the proven superior grip strength of patented FLOWTITE® Technology inside.

FASTER JOB-SITE TIMES

Improves job-site efficiencies, saving up to thirty minutes per installation versus the competitor's put-it-together kits. Factory-attached risers are ordered in varying lengths and fixture connection options – for fast tool-free installations.

ONE VALVE WORKS ON ALL PIPE

Designed for new construction and clean pipe installs on PEX, CPVC or Copper pipe.

OPTIONS AVAILABLE:

Clean White Look
Oil Rubbed Bronze Look
Chrome Look

EXPANSION & CRIMP

FLUSH TO WALL INSTALLATION

Eliminates unsightly long stub-outs

REMOVEABLE AND REPLACEABLE

Twist off to remove valve. Replace without cutting pipe.

PROVEN UDEL® EXPANSION COMPONENT MATERIAL

Same dependable material used by Uponor® for in-wall expansion fittings.

FASTER JOB-SITE TIMES

Improves job-site efficiencies, saving up to thirty minutes per installation versus the competitor's put-it-together kits. Factory-attached risers are ordered in varying lengths and fixture connection options – for fast tool-free installations.

OPTIONS AVAILABLE:

Clean White Look
Oil Rubbed Bronze Look
Chrome Look

FlowTite® CONNECT SYSTEM

FLOWTITE® 4ALL® BOX OUTLET BOXES

ENGINEERED
TO
ELIMINATE
IN-WALL
JOINT LEAKS



FLOWTITE® FIRE RATED 4ALL® BOX OUTLET BOXES

ACCOR®
TECHNOLOGY
FR BOX™



OUTLET BOXES

DECREASED LIABILITY

FLOWTITE® 4ALL® BOX is the only outlet box with no in-wall, valve-to-pipe connections. Fully accessible connections, fully sealed in box eliminates potential in-wall water damage and costly repairs protecting the builder, plumber and homeowner from costly repairs.

PROVEN, FLOWTITE® TECHNOLOGY INSIDE

Engineered to connect fully accessible FLOWTITE® Valves to pipe inside the box with a secondary O-Ring sealing the box to the pipe.

JOB-SITE ADAPTABILITY

Flexible to adapt to job installation needs with 3-way mounting. Valve mounts top or bottom. Available as valve only or with patented polymer/stainless steel hybrid arresters.

WASHING MACHINE & ICE MAKER BOXES

Washing machine outlet box configurations include arresters, condensation funnels and water softener funnels. One-Piece ice maker outlet box comes with factory-attached 84" flexible connector.

FIRE RATED OUTLET BOXES

DECREASED LIABILITY

FLOWTITE® 4ALL® BOX is the only outlet box with no in-wall, valve-to-pipe connections. Fully accessible connections, fully sealed in box eliminates potential in-wall water damage and costly repairs.

FASTER JOB-SITE TIMES

Improves job-site efficiencies, saving up to thirty minutes per installation versus the competitor's put-it-together kits.

PREINSTALLED FIRE RATED PAD

The one & two hour fire rated pad is conveniently located inside the box, so the Listings and Approvals are visible before and after installation.

WASHING MACHINE & ICE MAKER BOXES

Washing machine outlet box configurations include arresters, condensation funnels and water softener funnels. One-Piece ice maker outlet box comes with factory-attached 84" flexible connector.



SUPPLY STOP PUSH-FIT

1/2" nom. Supply Stop Valve Only x 3/8" Comp. Nut with Escutcheon.

Available with Factory Installed Shut-Off Clip Upon Request for an Additional Cost.



POLYMER CLEAN WHITE LOOK

ITEM NUMBER	ITEM NAME	FINISH	CARTON QUANTITY	CARTON WEIGHT
WHO-3136	P05-3 XF	Clean White Look	100 ea	12 LB
WHO-3135	P05-3 XC	Clean White Look	60 ea	7 LB
WHO-3137	P05-3 XFN	Clean White Look	100 ea	7 LB
WHO-3132	P05-2 XF	Clean White Look	60 ea	7 LB
WHO-3133	P05-2 XFN	Clean White Look	60 ea	7 LB



POLYMER BRUSHED CHROME LOOK

ITEM NUMBER	ITEM NAME	FINISH	CARTON QUANTITY	CARTON WEIGHT
WHO-3360	P05S-3 XF	Brushed Chrome Look	100 ea	12 LB
WHO-3359	P05S-3 XC	Brushed Chrome Look	60 ea	7 LB
WHO-3361	P05S-3 XFN	Brushed Chrome Look	100 ea	11 LB
WHO-3356	P05S-2 XF	Brushed Chrome Look	60 ea	7 LB



POLYMER OIL RUBBED BRONZE LOOK

ITEM NUMBER	ITEM NAME	FINISH	CARTON QUANTITY	CARTON WEIGHT
WHO-3413	P05B-3 XF	Oil Rubbed Bronze Look	10 ea	12 LB
WHO-3359	P05S-3 XC	Oil Rubbed Bronze Look	10 ea	2 LB



SUPPLY STOP CRIMP

1/2" nom. Crimp Supply Stop Valve Only x 3/8" Comp. Nut with Escutcheon.

Available with Factory Installed Shut-Off Clip Upon Request for an Additional Cost.



POLYMER CLEAN WHITE LOOK

ITEM NUMBER	ITEM NAME	FINISH	CARTON QUANTITY	CARTON WEIGHT
WHO-3044	C5-3 F	Clean White Look	100 ea	13 LB
WHO-3632	C5-3 FN	Clean White Look No Nut	100 ea	13 LB



SUPPLY STOP CRIMP



1/2" nom. Crimp Supply Stop Valve Only x 3/8" Comp. Nut with Escutcheon.
Available with Factory Installed Shut-Off Clip Upon Request for an Additional Cost.

POLYMER BRUSHED CHROME LOOK

ITEM NUMBER	ITEM NAME	FINISH	CARTON QUANTITY	CARTON WEIGHT
WHO-3072	C5S-3 F	Brushed Chrome Look	100 ea	13 LB



SUPPLY STOP EXPANSION



1/2" nom. Expansion Supply Stop Valve Only x 3/8" Comp. Nut with Escutcheon.
Available with Factory Installed Shut-Off Clip Upon Request for an Additional Cost.

POLYMER BRUSHED CHROME LOOK

ITEM NUMBER	ITEM NAME	FINISH	CARTON QUANTITY	CARTON WEIGHT
WHO-3106	E5S-3 F	Brushed Chrome Look	100 ea	13 LB



SUPPLY STOP EXPANSION



1/2" nom. Expansion Supply Stop Valve Only x 3/8" Comp. Nut with Escutcheon.
Available with Factory Installed Shut-Off Clip Upon Request for an Additional Cost.

POLYMER CLEAN WHITE LOOK

ITEM NUMBER	ITEM NAME	FINISH	CARTON QUANTITY	CARTON WEIGHT
WHO-3073	E5-3 F	Clean White Look	100 ea	13 LB
WHO-3601	E5-3 FN	Clean White Look	100 ea	13 LB

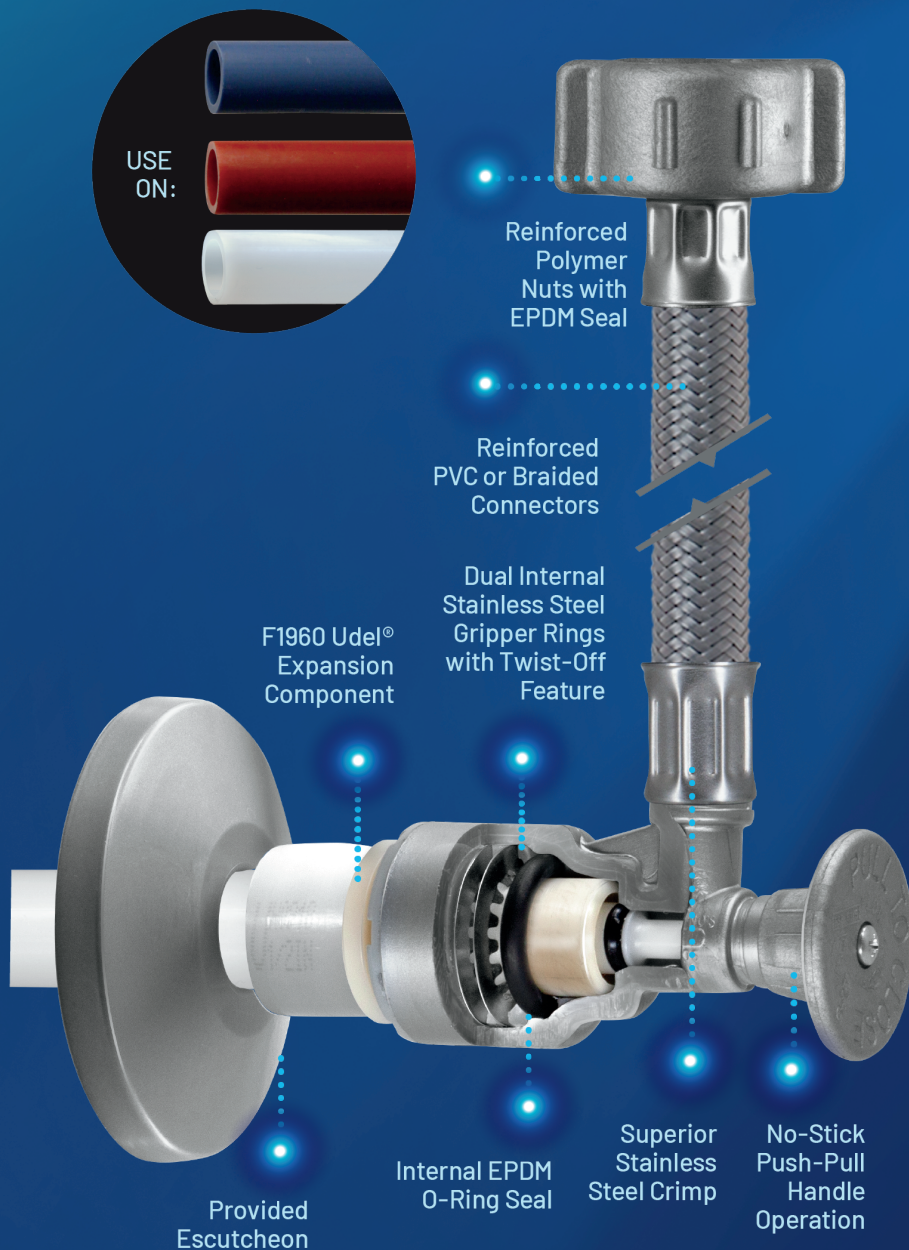
FlowTite® CONNECT SYSTEM

Built on the proven reliability, non-corrosive and superior grip strength of patented FLOWTITE® Technology inside.



FlowTite®

RELIABLE CONNECTIONS



FLOWTITE®

ONE-PIECE SUPPLY STOPS

MAXIMUM RELIABILITY

PATENTED, PROVEN RELIABLE

Dual internal stainless steel gripper rings – grips PEX better than the competition.

SUPERIOR TWIST-OFF-TO-REMOVE DESIGN

Competitors easy-release collar design can accidentally release with contact.

ONE VALVE WORKS ON ALL PIPE

Designed for new construction and clean installs on PEX, CPVC or Copper pipe.

TRUSTED BY PLUMBING PROS

Over 50 million valves installed in new homes since 1988.

ONE-PIECE ADVANTAGES

Engineered to eliminate potential joint leaks and provide faster job-site times with pre-ordered options and tool-free installations.

QUALITY ASSURANCE

USA manufacturing and quality control with 10 year warranty that includes labor.



FlowTite® CONNECT SYSTEM

ONE-PIECE SUPPLY STOPS *FlowTite®*



FAUCET PUSH - FIT

1/2" nom. Supply Stop with Factory Attached PVC or Braided Flexible Connector x 1/2" Reinforced Polymer IPS Nut with Escutcheon. Sold in Pairs. Upon Request 1/2" Metal IPS Nut may be Substituted for an Additional Cost.

Available with Factory Installed Shut-Off Clip Upon Request for an Additional Cost.

POLYMER CLEAN WHITE LOOK

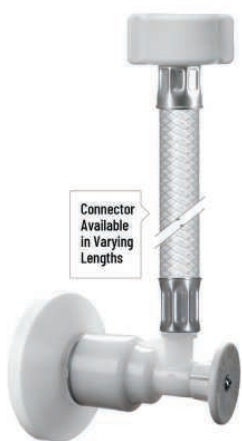
ITEM NUMBER	ITEM NAME	FINISH	CARTON QUANTITY	CARTON WEIGHT
WHO-3261	P05LP6-5 XP	Clean White Look	50 pr	22 LB
WHO-3284	P05LP9-5 XP	Clean White Look	50 pr	25 LB
WHO-3198	P05LP12-5 XP	Clean White Look	50 pr	27 LB
WHO-3204	P05LP15-5 XP	Clean White Look	50 pr	30 LB
WHO-3212	P05LP20-5 XP	Clean White Look	50 pr	33 LB
WHO-3217	P05LP24-5 XP	Clean White Look	50 pr	35 LB
WHO-3221	P05LP30-5 XP	Clean White Look	25 pr	20 LB
WHO-3226	P05LP36-5 XP	Clean White Look	25 pr	23 LB

POLYMER BRUSHED CHROME LOOK

ITEM NUMBER	ITEM NAME	FINISH	CARTON QUANTITY	CARTON WEIGHT
WHO-3288	P05LS12-5 XP	Brushed Chrome Look	50 pr	25 LB
WHO-3293	P05LS15-5 XP	Brushed Chrome Look	50 pr	27 LB
WHO-3297	P05LS20-5 XP	Brushed Chrome Look	50 pr	31 LB
WHO-3304	P05LS30-5 XP	Brushed Chrome Look	25 pr	20 LB

POLYMER OIL RUBBED BRONZE LOOK

ITEM NUMBER	ITEM NAME	FINISH	CARTON QUANTITY	CARTON WEIGHT
WHO-3178	P05LB12-5 XP	Oil Rubbed Bronze Look	10 pr	3 LB
WHO-3180	P05LB15-5 XP	Oil Rubbed Bronze Look	10 pr	3 LB
WHO-3184	P05LB20-5 XP	Oil Rubbed Bronze Look	10 pr	4 LB



ONE-PIECE SUPPLY STOPS *FlowTite*[®]



FAUCET  **CRIMP**

1/2" nom. Crimp Supply Stop with Factory Attached PVC or Braided Flexible Connector x 1/2" Reinforced Polymer IPS Nut with Escutcheon. Sold in Pairs. Upon Request 1/2" Metal IPS Nut may be Substituted for an Additional Cost.

Available with Factory Installed Shut-Off Clip Upon Request for an Additional Cost.



POLYMER CLEAN WHITE LOOK

ITEM NUMBER	ITEM NAME	FINISH	CARTON QUANTITY	CARTON WEIGHT
WHO-3049	C5LP15-5 PF	Clean White Look	100 ea	24 LB
WHO-3050	C5LP20-5 PF	Clean White Look	100 ea	27 LB
WHO-3051	C5LP30-5 PF	Clean White Look	50 ea	18 LB



POLYMER BRUSHED CHROME LOOK

ITEM NUMBER	ITEM NAME	FINISH	CARTON QUANTITY	CARTON WEIGHT
WHO-3064	C5LS15-5 PF	Brushed Chrome Look	100 ea	22 LB
WHO-3065	C5LS20-5 PF	Brushed Chrome Look	100 ea	28 LB

CRIMP VALVE FOR PEX

FLUSH TO WALL INSTALLATION

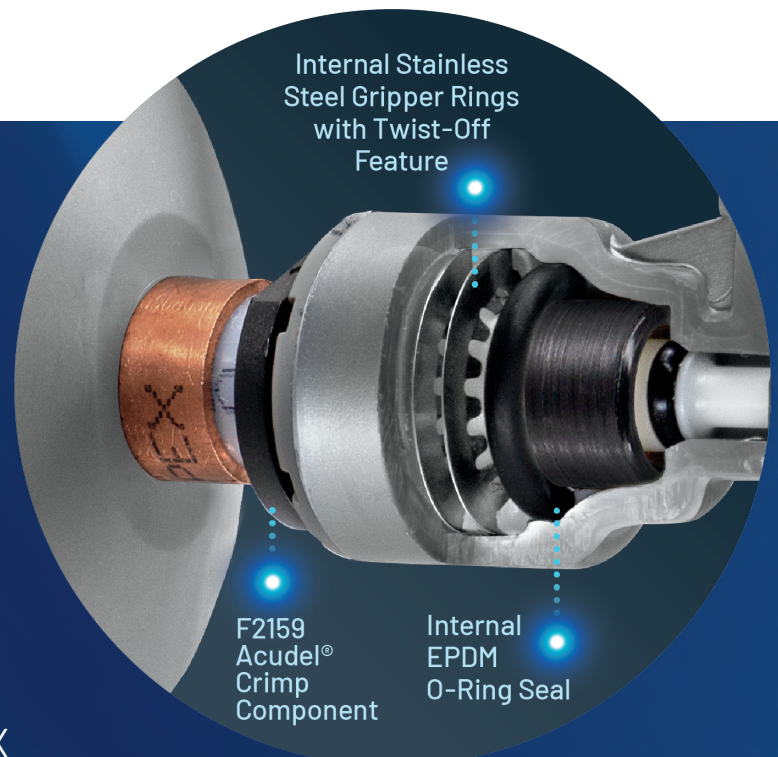
Clean, flush-to-wall installation with matching escutcheon valves installed since 1988.

REMOVEABLE AND REPLACEABLE

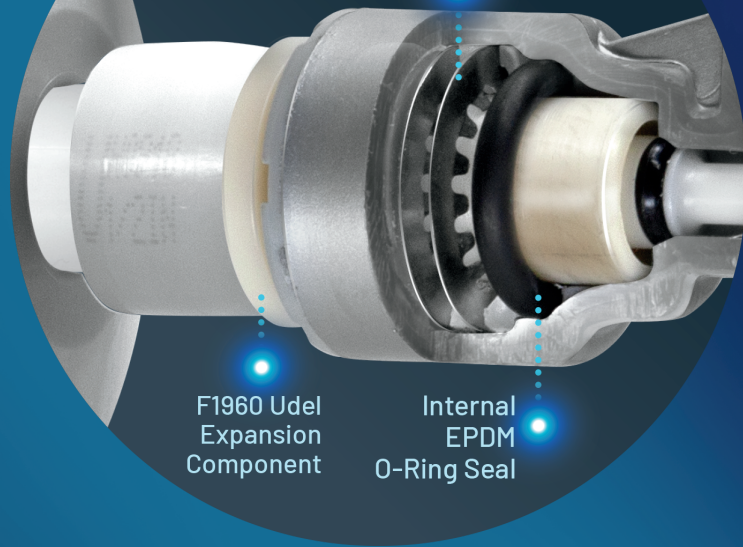
Twist off to remove valve. Replace without cutting pipe. Eliminate long dirty stub-outs.

PROVEN ACUDEL[®] CRIMP COMPONENT MATERIAL

Same dependable material used by major PEX manufacturers for in-wall fittings.



Internal Stainless Steel Gripper Rings with Twist-Off Feature



F1960 Udel Expansion Component

Internal EPDM O-Ring Seal

COLD EXPANSION VALVE FOR PEX

FLUSH TO WALL INSTALLATION

Eliminates unsightly long stub-outs.

REMOVABLE AND REPLACEABLE

Twist off to remove valve. Replace without cutting pipe. Eliminate long dirty stub-outs.

PROVEN UDEL® EXPANSION COMPONENT MATERIAL

Same dependable material used by Uponor® for in-wall Expansion fittings.

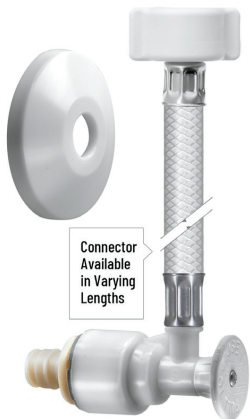
ONE-PIECE SUPPLY STOPS

FlowTite®



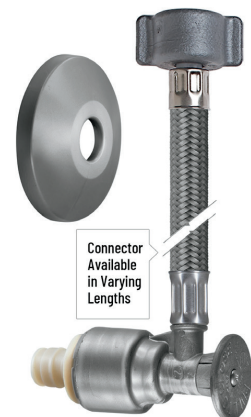
FAUCET EXPANSION

1/2" nom. Expansion Supply Stop with Factory Attached PVC or Braided Flexible Connector x 1/2" Reinforced Polymer IPS Nut with Escutcheon. Sold in Pairs. Upon Request 1/2" Metal IPS Nut may be Substituted for an Additional Cost. Available with Factory Installed Shut-Off Clip Upon Request for an Additional Cost.



POLYMER CLEAN WHITE LOOK

ITEM NUMBER	ITEM NAME	FINISH	CARTON QUANTITY	CARTON WEIGHT
WHO-3078	E5LP15-5 PF	Clean White Look	100 ea	24 LB
WHO-3080	E5LP20-5 PF	Clean White Look	100 ea	27 LB
WHO-3081	E5LP30-5 PF	Clean White Look	50 ea	18 LB



POLYMER BRUSHED CHROME LOOK

ITEM NUMBER	ITEM NAME	FINISH	CARTON QUANTITY	CARTON WEIGHT
WHO-3094	E5LS15-5 PF	Brushed Chrome Look	100 ea	22 LB
WHO-3095	E5LS20-5 PF	Brushed Chrome Look	100 ea	28 LB

ONE-PIECE SUPPLY STOPS *FlowTite*[®]



FAUCET PUSH - FIT

1/2" nom. Supply Stop with Factory Attached PVC or Braided Flexible Connector x 3/8" Comp. Brass Adapter with Escutcheon. For "Copper/Chrome Drop Faucets". Sold in pairs.

Available with Factory Installed Shut-Off Clip Upon Request for an Additional Cost.

POLYMER CLEAN WHITE LOOK



ITEM NUMBER	ITEM NAME	FINISH	CARTON QUANTITY	CARTON WEIGHT
WHO-3252	P05LP6-3 XC	Clean White Look	50 pr	24 LB
WHO-3282	P05LP9-3 XC	Clean White Look	50 pr	26 LB
WHO-3195	P05LP12-3 XC	Clean White Look	50 pr	28 LB
WHO-3200	P05LP15-3 XC	Clean White Look	50 pr	30 LB
WHO-3209	P05LP20-3 XC	Clean White Look	50 pr	33 LB
WHO-3219	P05LP30-3 XC	Clean White Look	25 pr	35 LB

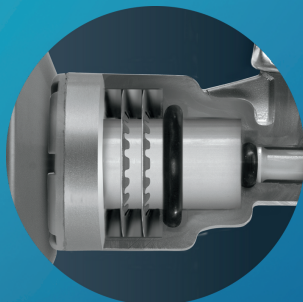


POLYMER BRUSHED CHROME LOOK

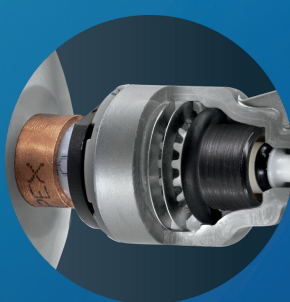
ITEM NUMBER	ITEM NAME	FINISH	CARTON QUANTITY	CARTON WEIGHT
WHO-3324	P05LS6-3 XC	Brushed Chrome Look	50 pr	22 LB
WHO-3286	P05LS12-3 XC	Brushed Chrome Look	50 pr	26 LB
WHO-3290	P05LS15-3 XC	Brushed Chrome Look	50 pr	28 LB
WHO-3295	P05LS20-3 XC	Brushed Chrome Look	50 pr	31 LB

ONE-PIECE CONNECTION OPTIONS

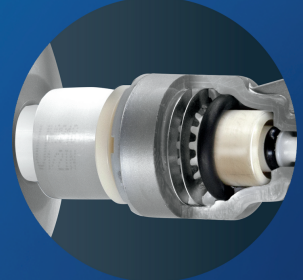
PUSH - FIT



CRIMP



EXPANSION



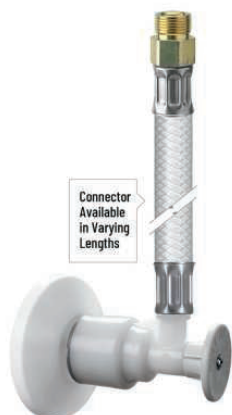
ONE-PIECE SUPPLY STOPS *FlowTite®*



FAUCET PUSH - FIT

1/2" nom. Supply Stop with Factory Attached PVC or Braided Flexible Connector x 3/8" Comp. Threaded Outlet Without Nut and Ferrule, Includes Escutcheon. For Delta® and Other Faucets with Factory Attached Connectors. Sold in Pairs.

Available with Factory Installed Shut-Off Clip Upon Request for an Additional Cost.



POLYMER CLEAN WHITE LOOK

ITEM NUMBER	ITEM NAME	FINISH	CARTON QUANTITY	CARTON WEIGHT
WHO-3253	P05LP6-3 XCN	Clean White Look	50 pr	24 LB
WHO-3283	P05LP9-3 XCN	Clean White Look	50 pr	26 LB
WHO-3196	P05LP12-3 XCN	Clean White Look	50 pr	28 LB
WHO-3201	P05LP15-3 XCN	Clean White Look	50 pr	30 LB
WHO-3210	P05LP20-3 XCN	Clean White Look	50 pr	33 LB



POLYMER BRUSHED CHROME LOOK

ITEM NUMBER	ITEM NAME	FINISH	CARTON QUANTITY	CARTON WEIGHT
WHO-3325	P05LS6-3 XCN	Brushed Chrome Look	50 pr	25 LB
WHO-3287	P05LS12-3 XCN	Brushed Chrome Look	50 pr	27 LB
WHO-3291	P05LS15-3 XCN	Brushed Chrome Look	50 pr	31 LB
WHO-3296	P05LS20-3 XCN	Brushed Chrome Look	50 pr	20 LB

USA MADE



WITH PRIDE

QUALITY ASSURANCE

TEN YEAR WARRANTY INCLUDES LABOR

Only FLOWTITE® Supply Stops have the superior grip strength of proven patented FLOWTITE® Technology inside. With over 50 million valves installed since 1988, FLOWTITE® is trusted by builders and plumbing pros. Manufacturing in the USA allows the most rigorous daily quality control test standards of any other manufacturer, which is why we back our products with the industry's best warranty – 10 years with included labor.

ONE-PIECE SUPPLY STOPS *FlowTite*[®]



FAUCET CRIMP

1/2" nom. Crimp Supply Stop with Factory Attached PVC or Braided Flexible Connector x 3/8" Comp. Threaded Outlet Without Nut and Ferrule, Includes Escutcheon. For Delta[®] and Other Faucets with Factory Attached Connectors.

Available with Factory Installed Shut-Off Clip Upon Request for an Additional Cost.

POLYMER CLEAN WHITE LOOK

ITEM NUMBER	ITEM NAME	FINISH	CARTON QUANTITY	CARTON WEIGHT
WHO-3059	C5LP6-3 CFN	Clean White Look	100 ea	22 LB

POLYMER BRUSHED CHROME LOOK

ITEM NUMBER	ITEM NAME	FINISH	CARTON QUANTITY	CARTON WEIGHT
WHO-3069	C5LS6-3 CFN	Brushed Chrome Look	100 ea	22 LB



FAUCET EXPANSION

1/2" nom. Expansion Supply Stop with Factory Attached PVC or Braided Flexible Connector x 3/8" Comp. Threaded Outlet Without Nut and Ferrule, Includes Escutcheon. For Delta[®] and Other Faucets with Factory Attached Connectors.

Available with factory installed shut-off clip upon request for an additional cost.

POLYMER CLEAN WHITE LOOK

ITEM NUMBER	ITEM NAME	FINISH	CARTON QUANTITY	CARTON WEIGHT
WHO-3089	E5LP6-3 CFN	Clean White Look	100 ea	22 LB

POLYMER BRUSHED CHROME LOOK

ITEM NUMBER	ITEM NAME	FINISH	CARTON QUANTITY	CARTON WEIGHT
WHO-3101	E5LS6-3 CFN	Brushed Chrome Look	100 ea	22 LB



ONE-PIECE SUPPLY STOPS *FlowTite*®



TOILET PUSH-FIT

1/2" nom. Supply Stop with Factory Attached PVC or Braided Flexible Connector x 7/8" Reinforced Polymer Ballcock Nut with Escutcheon.
Available with Factory Installed Shut-Off Clip Upon Request for an Additional Cost.

POLYMER CLEAN WHITE LOOK

ITEM NUMBER	ITEM NAME	FINISH	CARTON QUANTITY	CARTON WEIGHT
WHO-3158	P05CP9-7 XF	Clean White Look	50 ea	12 LB
WHO-3154	P05CP12-7 XF	Clean White Look	50 ea	13 LB
WHO-3156	P05CP15-7 XF	Clean White Look	50 ea	15 LB
WHO-3157	P05CP20-7 XF	Clean White Look	50 ea	16 LB

POLYMER BRUSHED CHROME LOOK

ITEM NUMBER	ITEM NAME	FINISH	CARTON QUANTITY	CARTON WEIGHT
WHO-3162	P05CS9-7 XF	Brushed Chrome Look	50 ea	11 LB
WHO-3154	P05CS12-7 XF	Brushed Chrome Look	50 ea	12 LB
WHO-3156	P05CS15-7 XF	Brushed Chrome Look	50 ea	13 LB
WHO-3157	P05CS20-7 XF	Brushed Chrome Look	50 ea	14 LB

POLYMER OIL RUBBED BRONZE LOOK

ITEM NUMBER	ITEM NAME	FINISH	CARTON QUANTITY	CARTON WEIGHT
WHO-3147	P05CB12-7 XF	Oil Rubbed Bronze Look	10 ea	3 LB
WHO-3149	P05CB15-7 XF	Oil Rubbed Bronze Look	10 ea	3 LB
WHO-3150	P05CB20-7 XF	Oil Rubbed Bronze Look	10 ea	4 LB



ONE-PIECE SUPPLY STOPS *FlowTite*[®]



TOILET CRIMP

1/2" nom. Crimp Supply Stop with Factory Attached PVC or Braided Flexible Connector x 7/8" Reinforced Polymer Ballcock Nut with Escutcheon.
Available with factory installed shut-off clip upon request for an additional cost.

POLYMER CLEAN WHITE LOOK

ITEM NUMBER	ITEM NAME	FINISH	CARTON QUANTITY	CARTON WEIGHT
WHO-3045	C5CP12-7 F	Clean White Look	50 ea	11 LB
WHO-3046	C5CP15-7 F	Clean White Look	50 ea	13 LB

POLYMER BRUSHED CHROME LOOK

ITEM NUMBER	ITEM NAME	FINISH	CARTON QUANTITY	CARTON WEIGHT
WHO-3047	C5CS12-7 F	Brushed Chrome Look	50 ea	11 LB
WHO-3048	C5CS15-7 F	Brushed Chrome Look	50 ea	12 LB



TOILET EXPANSION

1/2" nom. Expansion Supply Stop with Factory Attached PVC or Braided Flexible Connector x 7/8" Reinforced Polymer Ballcock Nut with Escutcheon.
Available with Factory Installed Shut-Off Clip Upon Request for an Additional Cost.

POLYMER CLEAN WHITE LOOK

ITEM NUMBER	ITEM NAME	FINISH	CARTON QUANTITY	CARTON WEIGHT
WHO-3074	E5CP12-7 F	Clean White Look	50 ea	11 LB
WHO-3075	E5CP15-7 F	Clean White Look	50 ea	13 LB

POLYMER BRUSHED CHROME LOOK

ITEM NUMBER	ITEM NAME	FINISH	CARTON QUANTITY	CARTON WEIGHT
WHO-3076	E5CS12-7 F	Brushed Chrome Look	50 ea	11 LB
WHO-3077	E5CS15-7 F	Brushed Chrome Look	50 ea	12 LB



ONE-PIECE SUPPLY STOPS *FlowTite*[®]



DISHWASHER PUSH-FIT



1/2" nom. Supply Stop with Factory Attached PVC or Braided Flexible Connector x 3/8" Comp. Nut x 1/2" M.I.P. Brass Elbow with Escutcheon.
Available with factory installed shut-off clip upon request for an additional cost.

POLYMER CLEAN WHITE LOOK

ITEM NUMBER	ITEM NAME	FINISH	CARTON QUANTITY	CARTON WEIGHT
WHO-3228	P05LP48-3 XL	Clean White Look	25 ea	16 LB
WHO-3241	P05LP60-3 XL	Clean White Look	25 ea	18 LB
WHO-3263	P05LP72-3 XL	Clean White Look	25 ea	20 LB
WHO-3273	P05LP84-3 XL	Clean White Look	25 ea	23 LB



POLYMER BRUSHED CHROME LOOK

ITEM NUMBER	ITEM NAME	FINISH	CARTON QUANTITY	CARTON WEIGHT
WHO-3318	P05LS60-3 XL	Brushed Chrome Look	25 ea	17 LB
WHO-3335	P05LS84-3 XL	Brushed Chrome Look	25 ea	21 LB



DISHWASHER PUSH-FIT



1/2" nom. Supply Stop with Factory Attached PVC or Braided Flexible Connector x 3/8" Comp. Nut with Escutcheon.
Available with factory installed shut-off clip upon request for an additional cost.

POLYMER CLEAN WHITE LOOK

ITEM NUMBER	ITEM NAME	FINISH	CARTON QUANTITY	CARTON WEIGHT
WHO-3240	P05LP60-3 XE	Clean White Look	25 ea	16 LB
WHO-3262	P05LP72-3 XE	Clean White Look	25 ea	18 LB
WHO-3272	P05LP84-3 XE	Clean White Look	25 ea	20 LB

ONE-PIECE SUPPLY STOPS *FlowTite*[®]



DISHWASHER CRIMP



1/2" nom. Crimp Supply Stop with Factory Attached PVC or Braided Flexible Connector x 3/8" Comp. Nut x 1/2" M.I.P. Brass Elbow with Escutcheon.

Available with factory installed shut-off clip upon request for an additional cost.

POLYMER CLEAN WHITE LOOK

ITEM NUMBER	ITEM NAME	FINISH	CARTON QUANTITY	CARTON WEIGHT
WHO-3055	C5LP60-3 EL	Clean White Look	25 ea	14 LB
WHO-3061	C5LP72-3 EL	Clean White Look	25 ea	16 LB

POLYMER BRUSHED CHROME LOOK

ITEM NUMBER	ITEM NAME	FINISH	CARTON QUANTITY	CARTON WEIGHT
WHO-3067	C5LS60-3 EL	Brushed Chrome Look	25 ea	15 LB
WHO-3071	C5LS72-3 EL	Brushed Chrome Look	25 ea	17 LB



DISHWASHER CRIMP



1/2" nom. Crimp Supply Stop with Factory Attached PVC or Braided Flexible connector x 3/8" Comp. Nut with Escutcheon.

Available with factory installed shut-off clip upon request for an additional cost.

POLYMER CLEAN WHITE LOOK

ITEM NUMBER	ITEM NAME	FINISH	CARTON QUANTITY	CARTON WEIGHT
WHO-3054	C5LP60-3 E	Clean White Look	25 ea	14 LB
WHO-3060	C5LP72-3 E	Clean White Look	25 ea	16 LB

POLYMER BRUSHED CHROME LOOK

ITEM NUMBER	ITEM NAME	FINISH	CARTON QUANTITY	CARTON WEIGHT
WHO-3066	C5LS60-3 E	Brushed Chrome Look	25 ea	15 LB
WHO-3070	C5LS72-3 E	Brushed Chrome+ Look	25 ea	17 LB

ONE-PIECE SUPPLY STOPS *FlowTite*[®]



DISHWASHER EXPANSION

1/2" nom. Expansion Supply Stop with Factory Attached PVC or Braided Flexible Connector x 3/8" Comp. Nut x 1/2" M.I.P. Brass Elbow with Escutcheon.

Available with factory installed shut-off clip upon request for an additional cost.

POLYMER CLEAN WHITE LOOK

ITEM NUMBER	ITEM NAME	FINISH	CARTON QUANTITY	CARTON WEIGHT
WHO-3085	E5LP60-3 EL	Clean White Look	25 ea	16 LB
WHO-3091	E5LP72-3 EL	Clean White Look	25 ea	18 LB

POLYMER BRUSHED CHROME LOOK

ITEM NUMBER	ITEM NAME	FINISH	CARTON QUANTITY	CARTON WEIGHT
WHO-3097	E5LS60-3 EL	Brushed Chrome Look	25 ea	15 LB
WHO-3103	E5LS72-3 EL	Brushed Chrome Look	25 ea	17 LB



DISHWASHER EXPANSION

1/2" nom. Expansion Supply Stop with Factory Attached PVC or Braided Flexible Connector x 3/8" Comp. Nut with Escutcheon.

Available with factory installed shut-off clip upon request for an additional cost.

POLYMER CLEAN WHITE LOOK

ITEM NUMBER	ITEM NAME	FINISH	CARTON QUANTITY	CARTON WEIGHT
WHO-3084	E5LP60-3 E	Clean White Look	25 ea	16 LB
WHO-3090	E5LP72-3 E	Clean White Look	25 ea	18 LB

POLYMER BRUSHED CHROME LOOK

ITEM NUMBER	ITEM NAME	FINISH	CARTON QUANTITY	CARTON WEIGHT
WHO-3096	E5LS60-3 E	Brushed Chrome Look	25 ea	15 LB
WHO-3102	E5LS72-3 E	Brushed Chrome+ Look	25 ea	17 LB



ONE-PIECE SUPPLY STOPS *FlowTite*[®]



DISHWASHER

PUSH-FIT

1/2" nom. Supply Stop with Factory Attached PVC or Braided Flexible Connector with Inline 3/8" Comp. Tee w/Cap x 1/2" Reinforced Polymer IPS Nut with Escutcheon.

Available with factory installed shut-off clip upon request for an additional cost.

POLYMER CLEAN WHITE LOOK

ITEM NUMBER	ITEM NAME	FINISH	CARTON QUANTITY	CARTON WEIGHT
WHO-3231	P05LP4T15-5 XE	Clean White Look	50 ea	28 LB
WHO-3233	P05LP4T15-5 XPE	Clean White Look	50 ea	28 LB
WHO-3237	P05LP4TC15-5 XPE	Clean White Look	50 ea	28 LB



DISHWASHER

CRIMP

1/2" nom. Supply Stop with Factory Attached PVC Flexible Connector with Inline 3/8" Comp. Tee w/Cap x 1/2" Reinforced Polymer IPS nut with Escutcheon.

Available with Factory Installed Shut-Off Clip Upon Request for an Additional Cost.

POLYMER CLEAN WHITE LOOK

ITEM NUMBER	ITEM NAME	FINISH	CARTON QUANTITY	CARTON WEIGHT
WHO-3052	C5LP4T15-5 PE	Clean White Look	50 ea	22 LB



FlowTite[®] CONNECT SYSTEM

Built on the proven reliability, non-corrosive and superior grip strength of patented FLOWTITE[®] Technology inside.

ONE-PIECE SUPPLY STOPS *FlowTite*®



DISHWASHER EXPANSION



1/2" nom. Expansion Supply Stop with Factory Attached PVC Flexible Connector with Inline 3/8" Comp. Tee w/Cap x 1/2" Reinforced Polymer IPS nut with Escutcheon.

Available with factory installed shut-off clip upon request for an additional cost.

POLYMER CLEAN WHITE LOOK

ITEM NUMBER	ITEM NAME	FINISH	CARTON QUANTITY	CARTON WEIGHT
WHO-3082	E5LP4T15-5 PE	Clean White Look	50 ea	22 LB



ICEMAKER PUSH-FIT



1/2" nom. Supply Stop with Factory Attached PVC Flexible Connector 1/4" Comp. Nut with Escutcheon.

Available with factory installed shut-off clip upon request for an additional cost.

POLYMER CLEAN WHITE LOOK

ITEM NUMBER	ITEM NAME	FINISH	CARTON QUANTITY	CARTON WEIGHT
WHO-3169	P05IP48-2 XF	Clean White Look	25 ea	10 LB
WHO-3170	P05IP60-2 XF	Clean White Look	25 ea	12 LB
WHO-3171	P05IP72-2 XF	Clean White Look	25 ea	13 LB
WHO-3173	P05IP84-2 XF	Clean White Look	25 ea	14 LB



QUALITY ASSURANCE

TEN YEAR WARRANTY INCLUDES LABOR

Only FLOWTITE® Supply Stops have the superior grip strength of proven patented FLOWTITE® Technology inside. With over 50 million valves installed since 1988, FLOWTITE® is trusted by builders and plumbing pros. Manufacturing in the USA allows the most rigorous daily quality control test standards of any other manufacturer, which is why we back our products with the industry's best warranty – 10 years with included labor.

ONE-PIECE SUPPLY STOPS *FlowTite*[®]



ARRESTER PUSH-FIT



Hybrid Stainless/Polymer Arrester with Manifold Tee and Escutcheon Push-Fits onto Pipe for Dishwasher and Faucet Connections. Supply Stop Valves Push-Fit onto the CPVC Manifold Tee for Applications Where Arresters are Required.

POLYMER CLEAN WHITE LOOK

ITEM NUMBER	ITEM NAME	FINISH	CARTON QUANTITY	CARTON WEIGHT
WHO-3131	PF50MT-AP XE	Clean White Look	25 ea	5 LB



DISHWASHER ARRESTER PUSH-FIT



1/2" nom. Supply Stop with Factory Attached PVC or Braided Flexible Connector with Manifold Tee and Hybrid Stainless/Polymer Arrester 3/8" Comp. Nut with Escutcheon.

Available with factory installed shut-off clip upon request for an additional cost.

POLYMER CLEAN WHITE LOOK

ITEM NUMBER	ITEM NAME	FINISH	CARTON QUANTITY	CARTON WEIGHT
WHO-3246	P05LP60-3APK XE	Clean White Look	25 ea	19 LB
WHO-3268	P05LP72-3APK XE	Clean White Look	25 ea	22 LB
WHO-3278	P05LP84-3APK XE	Clean White Look	25 ea	23 LB

Connector Available in Varying Lengths



DISHWASHER ARRESTER CRIMP



1/2" nom. Crimp Supply Stop with Factory Attached PVC Flexible Connector with Manifold Tee and Hybrid Stainless/Polymer Arrester 3/8" Comp. Nut with Escutcheon.

Available with factory installed shut-off clip upon request for an additional cost.

POLYMER CLEAN WHITE LOOK

ITEM NUMBER	ITEM NAME	FINISH	CARTON QUANTITY	CARTON WEIGHT
WHO-3057	C5LP60-3APK E	Clean White Look	25 ea	19 LB
WHO-3063	C5LP72-3APK E	Clean White Look	25 ea	21 LB

Connector Available in Varying Lengths

ONE-PIECE SUPPLY STOPS *FlowTite*[®]



DISHWASHER ARRESTER • EXPANSION



Hybrid Stainless/Polymer Arrester with Manifold Tee and Escutcheon Push-Fits onto Pipe for Dishwasher and Faucet Connections. Supply Stop Valves Push-Fit onto the CPVC Manifold Tee for Applications Where Arresters are Required.

POLYMER CLEAN WHITE LOOK

ITEM NUMBER	ITEM NAME	FINISH	CARTON QUANTITY	CARTON WEIGHT
WHO-3087	E5LP60-3APK E	Clean White Look	25 ea	19 LB
WHO-3093	E5LP72-3APK E	Clean White Look	25 ea	21 LB



DISHWASHER ARRESTER • PUSH-FIT



1/2" nom. Supply Stop with Factory Attached PVC or Braided Flexible Connector with Manifold Tee and Hybrid Stainless/Polymer Arrester x 3/8" Comp. Nut. M.I.P Brass Elbow- with Escutcheon.

Available with factory installed shut-off clip upon request for an additional cost.

POLYMER CLEAN WHITE LOOK

ITEM NUMBER	ITEM NAME	FINISH	CARTON QUANTITY	CARTON WEIGHT
WHO-3247	P05LP60-3APK XL	Clean White Look	25 ea	20 LB
WHO-3269	P05LP72-3APK XL	Clean White Look	25 ea	22 LB
WHO-3279	P05LP84-3APK XL	Clean White Look	25 ea	24 LB

WHEN EVERY CONNECTION COUNTS

FlowTite[®]



FAUCET



PVC Flexible Connector x 3/8" Comp. Nut x 1/2" Reinforced Polymer IPS Nut.

POLYMER CLEAN WHITE LOOK

ITEM NUMBER	ITEM NAME	FINISH	CARTON QUANTITY	CARTON WEIGHT
WHO-3493	R-LP12-5 PF	Clean White Look	50 ea	11 LB
WHO-3498	R-LP15-5 PF	Clean White Look	50 ea	13 LB
WHO-3501	R-LP20-5 PF	Clean White Look	50 ea	15 LB
WHO-3504	R-LP24-5 PF	Clean White Look	50 ea	16 LB
WHO-3507	R-LP30-5 PF	Clean White Look	50 ea	19 LB
WHO-3510	R-LP36-5 PF	Clean White Look	25 ea	12 LB

Braided Flexible Connector x 3/8" Comp. Nut x 1/2" Reinforced Polymer IPS Nut.

POLYMER BRUSHED CHROME LOOK

ITEM NUMBER	ITEM NAME	FINISH	CARTON QUANTITY	CARTON WEIGHT
WHO-3530	R-LS12-5 PF	Brushed Chrome Look	50 ea	10 LB
WHO-3533	R-LS15-5 PF	Brushed Chrome Look	50 ea	12 LB
WHO-3536	R-LS20-5 PF	Brushed Chrome Look	50 ea	13 LB
WHO-3539	R-LS24-5 PF	Brushed Chrome Look	50 ea	15 LB
WHO-3542	R-LS30-5 PF	Brushed Chrome Look	50 ea	18 LB
WHO-3545	R-LS36-5 PF	Brushed Chrome Look	25 ea	10 LB



FAUCET



PVC Flexible Connector x 1/2" Reinforced Polymer IPS Nut x 1/2" Reinforced Polymer IPS Nut.

POLYMER BRUSHED CHROME LOOK

ITEM NUMBER	ITEM NAME	FINISH	CARTON QUANTITY	CARTON WEIGHT
WHO-3447	R-5LP12-5 PF	Clean White Look	50 ea	12 LB
WHO-3449	R-5LP20-5 PF	Clean White Look	50 ea	16 LB



CONNECTORS

FlowTite®



FAUCET



PVC Flexible Connector x 3/8" Comp. Nut x 3/8" Comp. Nut.

POLYMER CLEAN WHITE LOOK



Connector Available in Varying Lengths

ITEM NUMBER	ITEM NAME	FINISH	CARTON QUANTITY	CARTON WEIGHT
WHO-3492	R-LP12-3 F	Clean White Look	50 ea	11 LB
WHO-3495	R-LP15-3 F	Clean White Look	50 ea	13 LB
WHO-3500	R-LP20-3 F	Clean White Look	50 ea	15 LB
WHO-3503	R-LP24-3 F	Clean White Look	50 ea	16 LB
WHO-3506	R-LP30-3 F	Clean White Look	50 ea	19 LB
WHO-3509	R-LP36-3 F	Clean White Look	25 ea	11 LB

Braided Flexible Connector x 3/8" Comp. Nut x 3/8" Comp. Nut.

POLYMER BRUSHED CHROME LOOK



Connector Available in Varying Lengths

ITEM NUMBER	ITEM NAME	FINISH	CARTON QUANTITY	CARTON WEIGHT
WHO-3529	R-LS12-3 F	Brushed Chrome Look	50 ea	10 LB
WHO-3532	R-LS15-3 F	Brushed Chrome Look	50 ea	12 LB
WHO-3535	R-LS20-3 F	Brushed Chrome Look	50 ea	13 LB
WHO-3538	R-LS24-3 F	Brushed Chrome Look	50 ea	15 LB
WHO-3541	R-LS30-3 F	Brushed Chrome Look	50 ea	18 LB
WHO-3544	R-LS36-3 F	Brushed Chrome Look	25 ea	10 LB

CONNECTORS

FlowTite®



FAUCET



PVC Flexible Connector x 3/8" Comp. Nut x 3/8" Comp. Brass Adapter.

POLYMER CLEAN WHITE LOOK

ITEM NUMBER	ITEM NAME	FINISH	CARTON QUANTITY	CARTON WEIGHT
WHO-3491	R-LP12-3 CF	Clean White Look	50 ea	12 LB
WHO-3494	R-LP15-3 CF	Clean White Look	50 ea	14 LB
WHO-3499	R-LP20-3 CF	Clean White Look	50 ea	16 LB
WHO-3502	R-LP24-3 CF	Clean White Look	50 ea	17 LB
WHO-3505	R-LP30-3 CF	Clean White Look	50 ea	20 LB
WHO-3508	R-LP36-3 CF	Clean White Look	25 ea	14 LB



Braided Flexible Connector x 3/8" Comp. Nut x 3/8" Comp. Nut.

POLYMER BRUSHED CHROME LOOK

ITEM NUMBER	ITEM NAME	FINISH	CARTON QUANTITY	CARTON WEIGHT
WHO-3528	R-LS12-3 CF	Brushed Chrome Look	50 ea	11 LB
WHO-3531	R-LS15-3 CF	Brushed Chrome Look	50 ea	13 LB
WHO-3534	R-LS20-3 CF	Brushed Chrome Look	50 ea	14 LB
WHO-3537	R-LS24-3 CF	Brushed Chrome Look	50 ea	16 LB
WHO-3540	R-LS30-3 CF	Brushed Chrome Look	50 ea	19 LB





TOILET



Connector
Available
in Varying
Lengths

PVC Flexible Connector x 3/8" Comp. Nut x 7/8" Reinforced Polymer Ballcock Nut.

POLYMER CLEAN WHITE LOOK

ITEM NUMBER	ITEM NAME	FINISH	CARTON QUANTITY	CARTON WEIGHT
WHO-3481	R-CP9-7 F	Clean White Look	50 ea	10 LB
WHO-3478	R-CP12-7 F	Clean White Look	50 ea	11 LB
WHO-3479	R-CP15-7 F	Clean White Look	50 ea	13 LB
WHO-3480	R-CP20-7 F	Clean White Look	50 ea	15 LB



Connector
Available
in Varying
Lengths

Braided Flexible Connector x 3/8" Comp. Nut x 7/8" Reinforced Polymer Ballcock Nut.

POLYMER BRUSHED CHROME LOOK

ITEM NUMBER	ITEM NAME	FINISH	CARTON QUANTITY	CARTON WEIGHT
WHO-3485	R-CS9-7 F	Brushed Chrome Look	50 ea	9 LB
WHO-3482	R-CS12-7 F	Brushed Chrome Look	50 ea	10 LB
WHO-3483	R-CS15-7 F	Brushed Chrome Look	50 ea	12 LB
WHO-3484	R-CS20-7 F	Brushed Chrome Look	50 ea	14 LB

Dedicated to Quality, Integrity & Innovation



CONNECTORS

FlowTite®



DISHWASHER

PVC Flexible Connector x 3/8" Comp. Nut x 3/8" Comp. Nut.

POLYMER CLEAN WHITE LOOK

ITEM NUMBER	ITEM NAME	FINISH	CARTON QUANTITY	CARTON WEIGHT
WHO-3511	R-LP48-3 E	Clean White Look	25 ea	13 LB
WHO-3514	R-LP60-3 E	Clean White Look	25 ea	16 LB
WHO-3519	R-LP72-3 E	Clean White Look	25 ea	18 LB
WHO-3519	R-LP84-3 E	Clean White Look	25 ea	20 LB
WHO-3522	R-LP120-3 E	Clean White Look	25 ea	26 LB



Connector Available in Varying Lengths

Braided Flexible Connector x 3/8" Comp. Nut x 3/8" Comp. Nut.

POLYMER BRUSHED CHROME LOOK

ITEM NUMBER	ITEM NAME	FINISH	CARTON QUANTITY	CARTON WEIGHT
WHO-3546	R-LS48-3 E	Brushed Chrome Look	25 ea	12 LB
WHO-3549	R-LS60-3 E	Brushed Chrome Look	25 ea	15 LB
WHO-3553	R-LS72-3 E	Brushed Chrome Look	25 ea	17 LB
WHO-3556	R-LS84-3 E	Brushed Chrome Look	25 ea	19 LB



Connector Available in Varying Lengths



DISHWASHER

PVC High Performance Connector x 3/8 inch Comp Nut MIP Brass Elbow

POLYMER CLEAN WHITE LOOK

ITEM NUMBER	ITEM NAME	FINISH	CARTON QUANTITY	CARTON WEIGHT
WHO-3512	R-LP48-3 EL	Clean White Look	25 ea	15 LB
WHO-3515	R-LP60-3 EL	Clean White Look	25 ea	18 LB
WHO-3520	R-LP72-3 EL	Clean White Look	25 ea	20 LB
WHO-3523	R-LP84-3 EL	Clean White Look	25 ea	22 LB
WHO-3489	R-LP120-3 EL	Clean White Look	25 ea	28 LB



Connector Available in Varying Lengths

CONNECTORS

FlowTite®



DISHWASHER

Braided Flexible Connector x 3/8 inch Comp Nut MIP Brass Elbow

POLYMER CLEAN WHITE LOOK

ITEM NUMBER	ITEM NAME	FINISH	CARTON QUANTITY	CARTON WEIGHT
WHO-3547	R-LS48-3 EL	Brushed Chrome Look	25 ea	14 LB
WHO-3550	R-LS60-3 EL	Brushed Chrome Look	25 ea	16 LB
WHO-3554	R-LS72-3 EL	Brushed Chrome Look	25 ea	18 LB
WHO-3557	R-LS84-3 EL	Brushed Chrome Look	25 ea	20 LB



ICEMAKER

PVC Flexible Connector x 1/4" Comp. Nut x 1/4" Comp. Nut.

POLYMER CLEAN WHITE LOOK

ITEM NUMBER	ITEM NAME	FINISH	CARTON QUANTITY	CARTON WEIGHT
WHO-3437	R-2IP60-2 F	Clean White Look	25 ea	10 LB
WHO-3438	R-2IP72-2 F	Clean White Look	25 ea	11 LB
WHO-3439	R-2IP84-2 F	Clean White Look	25 ea	12 LB



Braided Flexible Connector x 1/4" Comp. Nut x 1/4" Comp. Nut.

POLYMER BRUSHED CHROME LOOK

ITEM NUMBER	ITEM NAME	FINISH	CARTON QUANTITY	CARTON WEIGHT
WHO-3443	R-2IS60-2 F	Brushed Chrome Look	25 ea	9 LB
WHO-3444	R-2IS72-2 F	Brushed Chrome Look	25 ea	10 LB
WHO-3445	R-2IS84-2 F	Brushed Chrome Look	25 ea	11 LB



COUPLINGS

FlowTite®



1/2" Nom. Push-Fit Coupling with Factory Attached PVC or Braided Flexible Connector x 1/2" Nom. Push-Fit Coupling.

POLYMER CLEAN WHITE LOOK

ITEM NUMBER	ITEM NAME	FINISH	CARTON QUANTITY	CARTON WEIGHT
WHO-3399	PR50P15PR XF	Clean White Look	50 ea	13 LB
WHO-3401	PR50P20PR XF	Clean White Look	50 ea	15 LB
WHO-3402	PR50P24PR XF	Clean White Look	50 ea	17 LB
WHO-3404	PR50P30PR XF	Clean White Look	50 ea	19 LB
WHO-3405	PR50P36PR XF	Clean White Look	25 ea	11 LB



1/2" Nom. Push-Fit Coupling with Factory Attached PVC or Braided Flexible Connector x 1/2" Reinforced Polymer IPS Nut.

POLYMER CLEAN WHITE LOOK

ITEM NUMBER	ITEM NAME	FINISH	CARTON QUANTITY	CARTON WEIGHT
WHO-3372	PR50LP15-5 XPE	Clean White Look	50 ea	13 LB
WHO-3376	PR50LP20-5 XPE	Clean White Look	50 ea	15 LB

1/2" nom. Push-Fit Coupling with Factory Attached PVC or Braided Flexible Connector x 1/2" Reinforced Polymer IPS Nut.

POLYMER BRUSHED CHROME LOOK

ITEM NUMBER	ITEM NAME	FINISH	CARTON QUANTITY	CARTON WEIGHT
WHO-3389	PR50LS15-5 XPE	Brushed Chrome Look	50 ea	11 LB
WHO-3390	PR50LS20-5 XPE	Brushed Chrome Look	50 ea	13 LB



COUPLINGS

FlowTite®



1/2" Nom. Supply Stop with Factory Attached PVC or Braided Flexible Connector x 1/2" Nom. Push-Fit Coupling with Escutcheon.

Available with factory installed shut-off clip upon request for an additional cost.

POLYMER CLEAN WHITE LOOK

ITEM NUMBER	ITEM NAME	FINISH	CARTON QUANTITY	CARTON WEIGHT
WHO-3345	P05P20PR XF	Clean White Look	50 ea	14 LB
WHO-3346	P05P24PR XF	Clean White Look	50 ea	14 LB
WHO-3347	P05P30PR XF	Clean White Look	50 ea	15 LB



1/2" Nom. Push-Fit Coupling with Factory Attached PVC Connector x 1/2" Reinforced Polymer IPS Nut and Threaded 1/2" Nom.

Push-Fit Coupling. Removable and Reusable. FOR TEMPORARY USE ONLY.

POLYMER CLEAN WHITE LOOK

ITEM NUMBER	ITEM NAME	FINISH	CARTON QUANTITY	CARTON WEIGHT
WHO-3398	PR50P155TRK XF	Clean White Look	10 ea	3 LB
WHO-3400	PR50P205TRK XF	Clean White Look	10 ea	4 LB

1/2" Nom. Push-Fit Coupling with Factory Attached Braided Flexible Connector x 1/2" Reinforced Polymer IPS Nut and Threaded 1/2" Nom.

Push-Fit Coupling. Removable and Reusable. FOR TEMPORARY USE ONLY.

POLYMER BRUSHED CHROME LOOK

ITEM NUMBER	ITEM NAME	FINISH	CARTON QUANTITY	CARTON WEIGHT
WHO-3414	PR50S155TRK XF	Brushed Chrome Look	10 ea	2 LB
WHO-3416	PR50S205TRK XF	Brushed Chrome Look	10 ea	3 LB

FlowTite®

RELIABLE CONNECTIONS



Mount
Between
Studs
Using
Job Site
Pipe

Sturdy Front and
Back Nailing

Secondary O-Ring
Seals Box to Pipe

PUSHON®
Valves In Box

Stress-free
Swivel
Connections



Mount
Between
Studs
Using
Job Site
Pipe

Sturdy Front and
Back Nailing

Secondary O-Ring
Seals Box to Pipe

PUSHON®
Valves In Box

Superior
Stainless
Steel Crimp

Reinforced PVC
Connectors

4ALL® BOX

OUTLET BOXES

PREVENT
IN WALL LEAKS

VALVE-TO-PIPE CONNECTIONS
FULLY SEALED IN BOX

Eliminate costly water damage
from hidden in-wall leaky valves.

FLOWTITE® VALVES
PRE-INSTALLED

With superior gripping power of
proven, patented FLOWTITE®
Technology inside.

JOB-SITE ADAPTABILITY

Intelligent design adapts
to various job installation
requirements with three way
mounting.

WASHING MACHINE

Washing machine outlet box
configurations include arresters,
condensation funnels and water
softener funnels.

& ICE MAKER BOXES

One-Piece ice maker outlet box
comes with factory attached 84"
flexible connector.

FlowTite® CONNECT SYSTEM

OUTLET BOXES

FlowTite®



WASHING MACHINE ····· PUSH-FIT

4ALL® BOX

Single Drain Outlet Box, Valves Only. Bottom Position.
Includes Protective Covers.

POLYMER CLEAN WHITE LOOK



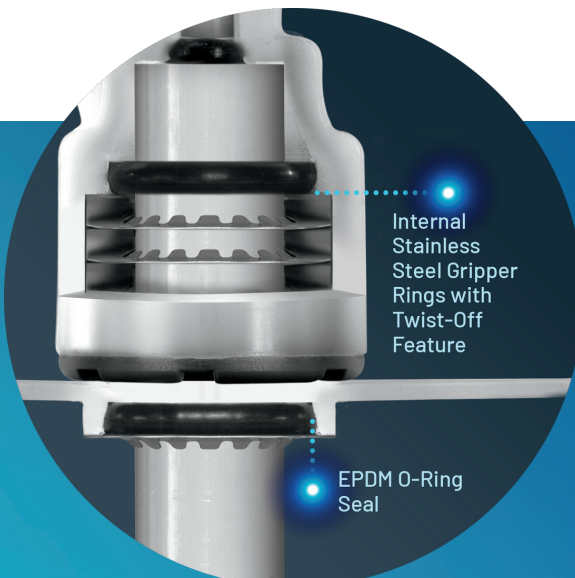
ITEM NUMBER	ITEM NAME	FINISH	CARTON QUANTITY	CARTON WEIGHT
WHO-3125	OWBP05-75-1B T	Clean White Look	10 ea	16 LB
WHO-3578	VWBP05-75-1B T	Clean White Look	10 ea	15 LB
WHO-3432	PWBP05-75-1B WT	Clean White Look	10 ea	13 LB
WHO-3599	XWBP05-75-1B T	Clean White Look	10 ea	14 LB

Single Drain Outlet Box, Valves Only. Top Position.
Includes Protective Covers.

POLYMER CLEAN WHITE LOOK



ITEM NUMBER	ITEM NAME	FINISH	CARTON QUANTITY	CARTON WEIGHT
WHO-3126	OWBP05-75-1T T	Clean White Look	10 ea	16 LB
WHO-3579	VWBP05-75-1T T	Clean White Look	10 ea	15 LB
WHO-3433	PWBP05-75-1T WT	Clean White Look	10 ea	13 LB
WHO-3600	XWBP05-75-1T T	Clean White Look	10 ea	14 LB



FLOWTITE® OUTLET BOXES

DECREASED LIABILITY

FLOWTITE® 4ALL® BOX is the only outlet box with no in-wall, valve-to-pipe connections. Fully accessible connections, fully sealed in box, eliminates potential in-wall water damage and costly repairs protecting the builder, plumber and homeowner from costly repair costs.

OUTLET BOXES

FlowTite®



WASHING MACHINE ······ PUSH-FIT

4ALL® BOX

Single Drain Outlet Box, Valves with Arresters. Bottom Position.
Includes Protective Covers.

POLYMER CLEAN WHITE LOOK



ITEM NUMBER	ITEM NAME	FINISH	CARTON QUANTITY	CARTON WEIGHT
WHO-3122	OWBP05-75-1APB T	Clean White Look	10 ea	18 LB
WHO-3575	VWBP05-75-1APB T	Clean White Look	10 ea	18 LB
WHO-3429	PWBP05-75-1APB WT	Clean White Look	10 ea	17 LB
WHO-3596	XWBP05-75-1APB T	Clean White Look	10 ea	18 LB

Single Drain Outlet Box, Valves with Arresters. Top Position.
Includes Protective Covers.

POLYMER CLEAN WHITE LOOK



ITEM NUMBER	ITEM NAME	FINISH	CARTON QUANTITY	CARTON WEIGHT
WHO-3123	OWBP05-75-1APT T	Clean White Look	10 ea	18 LB
WHO-3576	VWBP05-75-1APT T	Clean White Look	10 ea	18 LB
WHO-3430	PWBP05-75-1APT WT	Clean White Look	10 ea	17 LB
WHO-3597	XWBP05-75-1APT T	Clean White Look	10 ea	18 LB



WASHING MACHINE ······ PUSH-FIT

4ALL® BOX

Dual Box, Single Drain Outlet Box, Valves with Arresters.
Includes Protective Covers.

POLYMER CLEAN WHITE LOOK



ITEM NUMBER	ITEM NAME	FINISH	CARTON QUANTITY	CARTON WEIGHT
WHO-3607	PWBP05-75-1APB DWF	Clean White Look	6 ea	16 LB
WHO-3609	VWBP05-75-1APB DF	Clean White Look	6 ea	16 LB

OUTLET BOXES

FlowTite®



WASHING MACHINE • PUSH-FIT

4ALL® BOX

Dual Box, Single Drain Outlet Box, Valves Only. Includes Protective Covers.



POLYMER CLEAN WHITE LOOK

ITEM NUMBER	ITEM NAME	FINISH	CARTON QUANTITY	CARTON WEIGHT
WHO-3606	PWBP05-75-1B DWF	Clean White Look	6 ea	13 LB
WHO-3608	VWBP05-75-1B DF	Clean White Look	6 ea	13 LB



WASHING MACHINE • PUSH-FIT

4ALL® BOX

Single Drain Outlet Box, Valves with Arresters. Top Position. Includes Protective Covers.



POLYMER CLEAN WHITE LOOK

ITEM NUMBER	ITEM NAME	FINISH	CARTON QUANTITY	CARTON WEIGHT
WHO-3657	VBWSF1-2T DF	Clean White Look	6 ea	17 LB
WHO-3658	VBWSF3-4T DF	Clean White Look	6 ea	17 LB
WHO-3659	PBWSF1-2T DWF	Clean White Look	6 ea	18 LB
WHO-3660	PBWSF3-4T DWF	Clean White Look	6 ea	18 LB
WHO-3661	VBWSF1-2APT DF	Clean White Look	6 ea	17 LB
WHO-3662	VBWSF3-4APT DF	Clean White Look	6 ea	17 LB
WHO-3663	PBWSF1-2APT DWF	Clean White Look	6 ea	17 LB
WHO-3664	PBWSF 3-4APT DWF	Clean White Look	6 ea	17 LB

WHEN EVERY
CONNECTION COUNTS

OUTLET BOXES

FlowTite®



WASHING MACHINE **PUSH-FIT**

4ALL® BOX

Dual Box, Single Drain Outlet Box, Bottom Installed Valves with Arresters and Factory Installed Water Softener Funnel with Top Mounted Discharge Pipe. Includes Protective Covers.

POLYMER CLEAN WHITE LOOK



ITEM NUMBER	ITEM NAME	FINISH	CARTON QUANTITY	CARTON WEIGHT
WHO-3639	VBWSF 1-2APB DF	Clean White Look	6 ea	17 LB
WHO-3640	VBWSF 3-4 APB DF	Clean White Look	6 ea	17 LB
WHO-3638	VBWSF 3-4B DF	Clean White Look	6 ea	17 LB
WHO-3641	PBWSF 1-2B DWF	Clean White Look	6 ea	15 LB
WHO-3642	PBWSF 3-4B DWF	Clean White Look	6 ea	15 LB



WASHING MACHINE **PUSH-FIT**

4ALL® BOX

Washing Machine Box Valve with Polymer Arrester Rehau Pex



POLYMER CLEAN WHITE LOOK

ITEM NUMBER	ITEM NAME	FINISH	CARTON QUANTITY	CARTON WEIGHT
WHO-3832	RWBP05-75-1APB T	Clean White Look	10 ea	18 LB
WHO-3833	RWBP05-75-1APT T	Clean White Look	10 ea	18 LB
WHO-3834	RWBP05-75-1B T	Clean White Look	10 ea	17 LB
WHO-3835	RWBP05-75-1T T	Clean White Look	10 ea	18 LB



WASHING MACHINE **PUSH-FIT**

4ALL® BOX

Dual Box Water Softener Discharge Funnel with 1/2 inch Rehau UV & WMB



POLYMER CLEAN WHITE LOOK

ITEM NUMBER	ITEM NAME	FINISH	CARTON QUANTITY	CARTON WEIGHT
WHO-3591	RBWSF 1-2B DF	Clean White Look	6 ea	17 LB
WHO-3592	RBWSF1-2T DF	Clean White Look	6 ea	17 LB
WHO-3593	RBWSF 1-2APB DF	Clean White Look	6 ea	15 LB
WHO-3594	RBWSF 1-2APT DF	Clean White Look	6 ea	15 LB

OUTLET BOXES

FlowTite®



ICE MAKER PUSH-FIT

4ALL® BOX

Valve only. Includes protective cover.

POLYMER CLEAN WHITE LOOK



ITEM NUMBER	ITEM NAME	FINISH	CARTON QUANTITY	CARTON WEIGHT
WHO-3003	40BP05-2 T	Clean White Look	10 ea	19 LB
WHO-3023	4VBP05-2 T	Clean White Look	10 ea	17 LB
WHO-3013	4PBP05-2 WT	Clean White Look	10 ea	12 LB
WHO-3033	4XBP05-2 T	Clean White Look	10 ea	12 LB



ICE MAKER PUSH-FIT

4ALL® BOX

Washing Machine Box Valve

POLYMER CLEAN WHITE LOOK



ITEM NUMBER	ITEM NAME	FINISH	CARTON QUANTITY	CARTON WEIGHT
WHO-3008	40BP05IP84-2 T	Clean White Look	10 ea	17 LB
WHO-3028	4VBP05IP84-2 T	Clean White Look	10 ea	17 LB
WHO-3018	4PBP05IP84-2 WT	Clean White Look	10 ea	16 LB
WHO-3038	4XBP05IP84-2 T	Clean White Look	10 ea	16 LB



ICE MAKER PUSH-FIT

4ALL® BOX

Valve Only with Arrester. Includes Protective Cover.

POLYMER CLEAN WHITE LOOK



ITEM NUMBER	ITEM NAME	FINISH	CARTON QUANTITY	CARTON WEIGHT
WHO-3005	40BP05-2AP T	Clean White Look	10 ea	16 LB
WHO-3025	4VBP05-2AP T	Clean White Look	10 ea	15 LB
WHO-3015	4PBP05-2AP WT	Clean White Look	10 ea	14 LB
WHO-3035	4XBP05-2AP T	Clean White Look	10 ea	14 LB

OUTLET BOXES

FlowTite®



ICE MAKER **PUSH-FIT**

4ALL® BOX

Valve with Factory Attached PVC Connector x 1/4" Comp. Nut and Arrester. Includes Protective Cover.

POLYMER CLEAN WHITE LOOK



ITEM NUMBER	ITEM NAME	FINISH	CARTON QUANTITY	CARTON WEIGHT
WHO-3010	40BP05IP84-2AP T	Clean White Look	10 ea	20 LB
WHO-3030	4VBP05IP84-2AP T	Clean White Look	10 ea	18 LB
WHO-3020	4PBP05IP84-2AP WT	Clean White Look	10 ea	17 LB
WHO-3040	4XBP05IP84-2AP T	Clean White Look	10 ea	16 LB



ICE MAKER **PUSH-FIT**

4ALL® BOX

Ice Maker Box Valve - 1/2 inch PVC Connector - Arrester

POLYMER CLEAN WHITE LOOK



ITEM NUMBER	ITEM NAME	FINISH	CARTON QUANTITY	CARTON WEIGHT
WHO-3007	40BP05IP6-2APC T	Clean White Look	10 ea	17 LB
WHO-3027	4VBP05IP6-2APC T	Clean White Look	10 ea	16 LB
WHO-3017	4PBP05IP6-2APC WT	Clean White Look	10 ea	16 LB
WHO-3037	4XBP05IP6-2APC T	Clean White Look	10 ea	15 LB



ICE MAKER **PUSH-FIT**

4ALL® BOX

Ice Maker Box - Rehau

POLYMER CLEAN WHITE LOOK



ITEM NUMBER	ITEM NAME	FINISH	CARTON QUANTITY	CARTON WEIGHT
WHO-3836	4RBP05-2 T	Clean White Look	10 ea	6 LB
WHO-3837	4RBP05-2AP T	Clean White Look	10 ea	12 LB
WHO-3838	4RBP05IP6-2APC T	Clean White Look	10 ea	15 LB
WHO-3839	4RBP05IP84-2 T	Clean White Look	10 ea	16 LB
WHO-3840	4RBP05IP84-2AP T	Clean White Look	10 ea	17 LB

OUTLET BOXES

FlowTite®



ICE MAKER ·····PUSH-FIT

Round Ice Maker Box with Valve Only. Includes Protective Cover.

POLYMER CLEAN WHITE LOOK



ITEM NUMBER	ITEM NAME	FINISH	CARTON QUANTITY	CARTON WEIGHT
WHO-3109	OBP05-2 F	Clean White Look	6 ea	6 LB
WHO-3110	OBP05-2 T	Clean White Look	12 ea	12 LB



ICE MAKER ·····PUSH-FIT

Round Ice Maker Box with Valve with Factory Attached PVC Connector x 1/4" Comp Nut. Includes Protective Cover.

POLYMER CLEAN WHITE LOOK



ITEM NUMBER	ITEM NAME	FINISH	CARTON QUANTITY	CARTON WEIGHT
WHO-3114	OBP05IP84-2 F	Clean White Look	6 ea	9 LB
WHO-3115	OBP05IP84-2 T	Clean White Look	12 ea	18 LB



ICE MAKER ·····PUSH-FIT

Round Ice Maker Box with Valve with Factory Attached Braided Connector x 1/4" Comp Nut. Includes Protective Cover.

POLYMER CLEAN WHITE LOOK



ITEM NUMBER	ITEM NAME	FINISH	CARTON QUANTITY	CARTON WEIGHT
WHO-3118	OBP05IS84-2 F	Brushed Chrome Look	6 ea	9 LB
WHO-3119	OBP05IS84-2 T	Brushed Chrome Look	12 ea	18 LB

OUTLET BOXES

FlowTite®



ICE MAKER PUSH-FIT

Round Ice Maker Box with Valve Only-CPVC. Includes Protective Cover.

POLYMER CLEAN WHITE LOOK



ITEM NUMBER	ITEM NAME	FINISH	CARTON QUANTITY	CARTON WEIGHT
WHO-3561	VBPO5-2 F	Clean White Look	6 ea	6 LB
WHO-3562	VBPO5-2 T	Clean White Look	12 ea	12 LB



ICE MAKER PUSH-FIT

Round Ice Maker Box with Valve with Factory Attached PVC Connector x 1/4" Comp Nut. - CPVC. Includes Protective Cover.

POLYMER CLEAN WHITE LOOK



ITEM NUMBER	ITEM NAME	FINISH	CARTON QUANTITY	CARTON WEIGHT
WHO-3566	VBPO5IP84-2 F	Clean White Look	6 ea	9 LB
WHO-3567	VBPO5IP84-2 T	Clean White Look	12 ea	18 LB



ICE MAKER PUSH-FIT

Valve with Factory Attached 84" Braided Connector x 1/4" Comp Nut. Includes Protective Cover.

POLYMER CLEAN WHITE LOOK



ITEM NUMBER	ITEM NAME	FINISH	CARTON QUANTITY	CARTON WEIGHT
WHO-3570	VBPO5IS84-2 F	Brushed Chrome Look	6 ea	7 LB
WHO-3571	VBPO5IS84-2 T	Brushed Chrome Look	12 ea	14 LB

OUTLET BOXES

FlowTite®



ICE MAKER CRIMP



Round Ice Maker Box with Valve Only- Copper PEX. Includes Protective Cover.

POLYMER CLEAN WHITE LOOK

ITEM NUMBER	ITEM NAME	FINISH	CARTON QUANTITY	CARTON WEIGHT
WHO-3586	XBP05-2 F	Clean White Look	6 ea	6 LB
WHO-3587	XBP05-2 T	Clean White Look	12 ea	12 LB
WHO-3128	PBP05-2 WT	Clean White Look	12 ea	12 LB



ICE MAKER CRIMP



Round Ice Maker Box with Valve with Factory Attached 84" PVC Connector x 1/4" Comp Nut. - Copper PEX. Includes Protective Cover.

POLYMER CLEAN WHITE LOOK

ITEM NUMBER	ITEM NAME	FINISH	CARTON QUANTITY	CARTON WEIGHT
WHO-3566	XBP05IP84-2 F	Clean White Look	6 ea	9 LB
WHO-3567	XBP05IP84-2 T	Clean White Look	12 ea	18 LB
WHO-3127	PBP05IP84-2 WT	Clean White Look	12 ea	18 LB



ICE MAKER CRIMP



Valve with Factory Attached 84" Braided Connector x 1/4" Comp Nut. Includes Protective Cover.

POLYMER CLEAN WHITE LOOK

ITEM NUMBER	ITEM NAME	FINISH	CARTON QUANTITY	CARTON WEIGHT
WHO-3129	PBP05IS84-2 WT	Brushed Chrome Look	12 ea	14 LB

FIRE RATED OUTLET BOXES *FlowTite*[®]



WASHING MACHINE BOX **FIRE-RATED**

4ALL[®] BOX

4ALL[®] BOX Fire Rated Washing Machine Box

ACCOR[®]
TECHNOLOGY
FR BOX[™]



POLYMER CLEAN WHITE LOOK



ITEM NUMBER	ITEM NAME	FINISH	CARTON QUANTITY	CARTON WEIGHT
WHO-3786	FR1 OWBP05-75-1B T	Clean White Look	10 ea	18 LB
WHO-3787	FR1 OWBP05-75-1T T	Clean White Look	10 ea	17 LB
WHO-3790	FR1 PWBP05-75-1B WT	Clean White Look	10 ea	15 LB
WHO-3791	FR1 PWBP05-75-1T WT	Clean White Look	10 ea	16 LB
WHO-3794	FR1 VWBP05-75-1B T	Clean White Look	10 ea	18 LB
WHO-3795	FR1 VWBP05-75-1T T	Clean White Look	10 ea	17 LB
WHO-3798	FR1 XWBP05-75-1B T	Clean White Look	10 ea	16 LB
WHO-3799	FR1 XWBP05-75-1T T	Clean White Look	10 ea	15 LB
WHO-3784	FR1 OWBP05-75-1APB T	Clean White Look	10 ea	20 LB
WHO-3785	FR1 OWBP05-75-1APT T	Clean White Look	10 ea	20 LB
WHO-3788	FR1 PWBP05-75-1APB WT	Clean White Look	10 ea	19 LB
WHO-3789	FR1 PWBP05-75-1APT WT	Clean White Look	10 ea	20 LB
WHO-3792	FR1 VWBP05-75-1APB T	Clean White Look	10 ea	20 LB
WHO-3793	FR1 VWBP05-75-1APT T	Clean White Look	10 ea	20 LB
WHO-3796	FR1 XWBP05-75-1APB T	Clean White Look	10 ea	19 LB
WHO-3797	FR1 XWBP05-75-1APT T	Clean White Look	10 ea	20 LB

DESIGNED & BUILT TO PREVENT THE SPREAD OF FIRE & IN-WALL LEAKS

ACCOR's patented FLOWTITE[®] Technology enables the attachment of our proven, FLOWTITE[®] valves to the pipe INSIDE the 4ALL[®] BOX and a secondary O-Ring seals the box to the pipe. This unique design eliminates in-wall (outside box) valve-to-pipe connections protecting the builder, plumber and homeowner from costly concealed water damage. And we back our Made-in-USA valves with a written 10-year warranty.

ACCOR[®]
TECHNOLOGY
FR BOX[™]



FIRE RATED OUTLET BOXES *FlowTite*[®]



ICE MACHINE BOX  FIRE-RATED

4ALL[®] BOX

ACCOR[®]
TECHNOLOGY
FR BOX[™]



4ALL[®] BOX Fire Rated Ice Machine Box

POLYMER CLEAN WHITE LOOK

ITEM NUMBER	ITEM NAME	FINISH	CARTON QUANTITY	CARTON WEIGHT
WHO-3763	FR1 4OBP05-2 T	Clean White Look	10 ea	21 LB
WHO-3766	FR1 4OBP05IP84-2 T	Clean White Look	10 ea	19 LB
WHO-3768	FR1 4PBP05-2 WT	Clean White Look	10 ea	19 LB
WHO-3771	FR1 4PBP05IP84-2 WT	Clean White Look	10 ea	18 LB
WHO-3773	FR1 4VBP05-2 T	Clean White Look	10 ea	14 LB
WHO-3776	FR1 4VBP05IP84-2 T	Clean White Look	10 ea	19 LB
WHO-3778	FR1 4XBP05-2 WT	Clean White Look	10 ea	18 LB
WHO-3781	FR1 4XBP05IP6-2C T	Clean White Look	10 ea	17 LB
WHO-3782	FR1 4XBP05IP84-2 T	Clean White Look	10 ea	19 LB
WHO-3764	FR1 4OBP05-2AP T	Clean White Look	10 ea	19 LB
WHO-3765	FR1 4OBP05IP6-2APC T	Clean White Look	10 ea	14 LB
WHO-3767	FR1 4OBP05IP84-2AP T	Clean White Look	10 ea	18 LB
WHO-3769	FR1 4PBP05-2AP WT	Clean White Look	10 ea	19 LB
WHO-3770	FR1 4PBP05IP6-2APC WT	Clean White Look	10 ea	17 LB
WHO-3772	FR1 4PBP05IP84-2AP WT	Clean White Look	10 ea	18 LB
WHO-3774	FR1 4VBP05-2AP T	Clean White Look	10 ea	18 LB
WHO-3775	FR1 4VBP05IP6-2APC T	Clean White Look	10 ea	18 LB
WHO-3777	FR1 4VBP05IP84-2AP T	Clean White Look	10 ea	18 LB
WHO-3779	FR1 4XBP05-2AP T	Clean White Look	10 ea	16 LB
WHO-3780	FR1 4XBP05IP6-2APC T	Clean White Look	10 ea	18 LB
WHO-3783	FR1 4XBP05IP84-2AP T	Clean White Look	10 ea	19 LB



FlowTite

ACCOR[®]
TECHNOLOGY

www.accortechology.com

1-800-447-5848



REPAIR-SERIES®

COMPRESSION VALVE REPLACEMENT

ELIMINATES
IN-WALL REPAIRS
INSTALLS OVER OLD FERRULE

The only supply stop valve that
installs over old brass ferrule on
COPPER and CPVC.

SAVES TIME AND MONEY

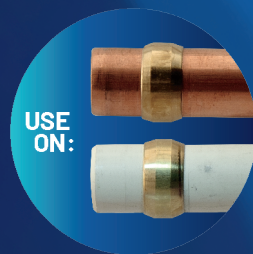
No in-wall repairs and no old
brass ferrule removal saving
substantial time and labor.

ONE-PIECE ADVANTAGES

Engineered to eliminate
potential joint leaks and
provide faster job-site times
with pre-ordered options and
tool-free installations.

QUALITY ASSURANCE

USA manufacturing and quality
control with 10 year warranty
that includes labor.



Reinforced
Polymer
Nuts with
EPDM Seal

Reinforced
PVC or Braided
Connectors

Internal Stainless Steel
Gripper Rings with
Twist-Off Feature

Installs Over Old
Brass Ferrule

Provided
Escutcheon

Internal EPDM
O-Ring Seal

Superior
Stainless
Steel Crimp

No-Stick
Push-Pull
Handle
Operation



SUPPLY STOPS

FlowTite®



SUPPLY STOP PUSH-FIT

REPAIR-SERIES®

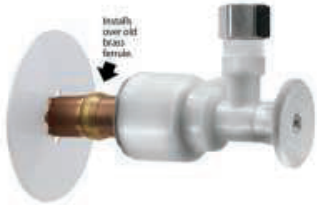
COMPRESSION REPLACEMENT

1/2" Nom. Supply Stop Valve Only x 3/8" Comp. Nut with Escutcheon.

Available with Factory Installed Shut-Off Clip Upon Request for an Additional Cost.

POLYMER CLEAN WHITE LOOK

ITEM NUMBER	ITEM NAME	FINISH	CARTON QUANTITY	CARTON WEIGHT
WHO-3679	P05-3 R	Clean White Look	100 ea	13 LB



FAUCET PUSH-FIT

REPAIR-SERIES®

COMPRESSION REPLACEMENT

1/2" Nom. Supply Stop with Factory Attached PVC or Braided Flexible

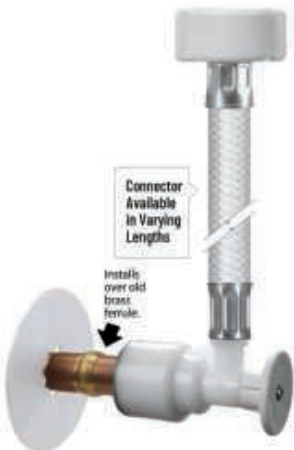
Connector x 1/2" Reinforced Polymer IPS Nut with Escutcheon. Sold in Pairs.

Upon Request 1/2" Metal IPS Nut may be Substituted for an Additional Cost.

Available with Factory Installed Shut-Off Clip Upon Request for an Additional Cost.

POLYMER CLEAN WHITE LOOK

ITEM NUMBER	ITEM NAME	FINISH	CARTON QUANTITY	CARTON WEIGHT
WHO-3722	P05LP15-5 R	Clean White Look	50 pr	25 LB
WHO-3694	P05LP20-5 R	Clean White Look	50 pr	29 LB
WHO-3695	P05LP30-5 R	Clean White Look	25 pr	19 LB



1/2" Nom. Supply Stop with Factory Attached PVC or Braided Flexible

Connector x 3/8" Comp. Brass Adapter with Escutcheon. For Copper/Chrome Drop Faucets". Sold in pairs.

Available with factory installed shut-off clip upon request for an additional cost.

POLYMER CLEAN WHITE LOOK

ITEM NUMBER	ITEM NAME	FINISH	CARTON QUANTITY	CARTON WEIGHT
WHO-3696	P05LP12-3 CR	Clean White Look	50 pr	25 LB
WHO-3697	P05LP15-3 CR	Clean White Look	50 pr	29 LB
WHO-3698	P05LP20-3 CR	Clean White Look	50 pr	33 LB



ONE-PIECE SUPPLY STOPS *FlowTite*®



TOILET *PUSH-FIT*

REPAIR-SERIES®

COMPRESSION REPLACEMENT

1/2" Nom. Supply Stop with Factory Attached PVC or Braided Flexible Connector x 7/8" Reinforced Polymer Ballcock Nut with Escutcheon.
Available with Factory Installed Shut-Off Clip Upon Request for an Additional Cost.

POLYMER CLEAN WHITE LOOK

ITEM NUMBER	ITEM NAME	FINISH	CARTON QUANTITY	CARTON WEIGHT
WHO-3705	P05CP9-7 R	Clean White Look	50 ea	12 LB
WHO-3706	P05CP12-7 R	Clean White Look	50 ea	13 LB
WHO-3707	P05CP15-7 R	Clean White Look	50 ea	14 LB
WHO-3708	P05CP20-7 R	Clean White Look	50 ea	15 LB



DISHWASHER *PUSH-FIT*

REPAIR-SERIES®

COMPRESSION REPLACEMENT

1/2" Nom. Supply Stop with Factory Attached PVC or Braided Flexible Connector x 3/8" Comp. Nut x 1/2" M.I.P. Brass Elbow with Escutcheon.
Available with Factory Installed Shut-Off Clip Upon Request for an Additional Cost.

POLYMER CLEAN WHITE LOOK

ITEM NUMBER	ITEM NAME	FINISH	CARTON QUANTITY	CARTON WEIGHT
WHO-3711	P05LP60-3 RL	Clean White Look	25 ea	17 LB
WHO-3712	P05LP72-3 RL	Clean White Look	25 ea	19 LB
WHO-3164	P05E R	Clean White Look	25 ea	2 LB



AIR ADMITTANCE VALVE *FlowTite*®



AAV *PUSH-FIT*

Air Admittance Valve- 2" & 4" Available

POLYMER CLEAN WHITE LOOK

ITEM NUMBER	ITEM NAME	FINISH	CARTON QUANTITY	CARTON WEIGHT
WHO-3104	2" AAV PVC	Clean White Look	25 ea	4 LB
WHO-3105	2" AAV ABS	Black Look	25 ea	4 LB
WHO-3112	4" AAV PVC	Clean White Look	14 ea	6.5 LB
WHO-3113	4" AAV ABS	Black Look	14 ea	6.5 LB





ACCESSORIES

ITEM NUMBER	ITEM NAME	CARTON QUANTITY	CARTON WEIGHT
WHO-3107	Full Thread Arrester	25 ea	5 LB
WHO-3146	P05CAP XF	100 ea	5 LB
WHO-3426	PR50T5 XF	100 ea	5 LB
WHO-3427	PR50T5C XF	100 ea	5 LB
WHO-3002	4ALL Funnel	10 ea	1 LB
WHO-3041	BLUE CLIPS	100 ea	1 LB
WHO-3140	P05 AP	50 ea	4 LB
WHO-3163	P05E	100 ea	1 LB
WHO-3165	P05E-S	25 ea	1 LB
WHO-3340	Brass TEE	50 ea	7 LB
WHO-3341	Brass CAP -GROMMET	50 ea	1 LB
WHO-3352	P05RING	100 ea	1 LB
WHO-3486	RED CLIP	100 ea	1 LB
WHO-3665	WBPLUG 50PK	50 ea	1 LB
WHO-3666	WBPLUG-BULK 100 PK	100 ea	1 LB
WHO-3042	BOXOnly-1	12 ea	6 LB
WHO-3108	FACEPLATE-1	12 ea	1 LB
WHO-3000	4ALLBox T	10 ea	10 LB
WHO-3001	4ALL Faceplate T	10 ea	2.5 LB
WHO-3373	Loose Key	75 ea	8 LB

CODES, LISTINGS & STANDARDS FlowTite®

LISTINGS & CERTIFICATIONS

Product	Listings	Manufactured In Accordance With
Supply Stop Valves	NSF/ANSI 61 IAPMO File 2657 (cUPC/IPC, NPC) IAPMO File 6518 other city, county and state approvals	NSF/ANSI 61 Section 9 ASME A112.18.1/CSA B125.1 Section 1417(d) SDWA - NSF/ANSI 372 Low Lead
Pipe Fittings	NSF/ANSI 61 IAPMO File 2657 (cUPC/IPC, NPC) IAPMO File 6518	NSF/ANSI 61 Section 9 ASME A112.18.1/CSA B125.1 Section 1417(d) SDWA - NSF/ANSI 372 Low Lead
Flexible Water Connectors	NSF/ANSI 61 IAPMO File 3969 (UPC/IPC) IAPMO File 6518	NSF/ANSI 61 Section 9 ASME A112.18.6/CSA B125.6 Section 1 417(d) SDWA - NSF/ANSI 372 Low Lead
Outlet Boxes	IAPMO File 3893 (UPC/IPC)	PS 54-2015
Test Caps, Repair Kits	NSF/ANSI 61	NSF/ANSI 61 Section 9
Water Hammer Arresters	IAPMO File 5838 (cUPC/IPC, NPC) IAPMO File 6518	ASSE 1010 Section 1417(d) SDWA - NSF/ANSI 372 Low Lead

CODE KEY

ASME	American Society of Mechanical Engineer
ASSE	American Society of Sanitary Engineering
ASTM	American Society for Testing & Materials
CSA	Canadian Standards Association
IAPMO	International Association of Plumbing & Mechanical Officials
IPC	International Plumbing Code
NPC	National Plumbing Code of Canada
NSF/ANSI	National Sanitation Foundation/American National Standards Institute
SDWA	Safe Drinking Water Act
UPC	Uniform Plumbing Code

CAUTION

Flux contains corrosive chemicals that can damage plastic & metal components. DO NOT ALLOW FLUX TO COME IN CONTACT WITH PUSHON® PRODUCTS. Do not use bleach, cleaners containing acid, or any other corrosive chemicals on PUSHON® products. ACCOR Technology, Inc. does warrant any failure due to faulty installation or abuse, stress condition, excessive water hammer, over torque, damaged or defective pipe, exposure to below freezing conditions, excessive heat and/or corrosive chemicals and/ or other destructive materials.

INFORMATION

FlowTite®

FREIGHT

FREIGHT TERMS: All shipments are F. O. B. shipping point. Shipments from factory less than \$3,500 U.S. are F. O. B. factory. Factory shipments of \$3,500 and over within the continental U.S. will be prepaid and allowed when made at the lowest motor carrier transportation rate. "F. O. B. shipping point" or "F. O. B. origin" indicates the buyer takes responsibility for the goods when the goods leave the seller's premises.

TERMS OF SALE

All sales are F. O. B. shipping point.

PAYMENT TERMS

Invoices are due and payable 30 days from the date of the invoice. A 2% cash discount is allowed on the net amount of the invoice if paid within 10 days of the invoice date. Postmark on the envelope will be considered the date of the check. Discounts are not allowed on freight or surcharges.

GENERAL

All discounts are for orders shipped to one destination.

PRICES

All prices subject to change without notice. Orders will be invoiced at prices at time of shipment. A 5% surcharge will be added to orders of less than carton quantity.*

RETURNS

Any return of any products must be approved by ACCOR Technology, Inc. and issued Return Goods Authorization number (RGA). Absolutely no returns will be accepted or replaced without an RGA#. Products which are obsolete or made to order CANNOT be returned. ACCOR reserves the right to deny any RGA request of non-defective product. Approved requests will include a service charge of 25% of the net purchased price of the goods plus all transportation expenses. Loss and/or damage claims must be reported within 5 days of receipt of order. Material returned with our consent will be replaced less the value of the freight and 25% handling charge.



CORROSION FREE, LEAD FREE AND CERTIFIED HEALTH SAFE

FLOWTITE® innovative design eliminates internal and external corrosion while introducing a clean look for today's modern homes. ACCOR valves are certified to health standards requested by the EPA and adopted by ANSI.



CODE ACCEPTANCE

FLOWTITE® supply stops are IAPMO and NSF listed and meet requirements of UPC, IPC and NPC of Canada and other state and local codes. Manufactured in accordance with ASME A112.18.1/ CSA B125.1 and NSF/ANSI 61. ASME A112.18. ARRESTOR STANDARD, PUSH-FIT STANDARD.

FlowTite®

RELIABLE CONNECTIONS

10-YEAR LIMITED WARRANTY

ACCOR® Technology, Inc. warrants to the original consumer purchaser that FlowTite® supply stop valves shall be free from defects in material and workmanship for a period of 10 years in residential use or 1 year in commercial use from the date of purchase as shown on purchaser's receipt.

In the event that this product fails to function during the warranty period due to proven defects in material or workmanship, ACCOR will pay to the consumer the prorated reasonable cost including labor, of removing the defective valve and replacing it with a new FlowTite valve.

This will be the only remedy available to the consumer for defective FlowTite® valves. In no event will ACCOR be liable for damages caused by installation, re-installation, repair or replacement, incidental and consequential damages or damages to property, its contents or its occupants. This warranty is void when valves are used on pipe that does not meet the specifications or otherwise conform to ASTM standards for copper, CPVC or PEX pipe.

Some jurisdictions do not allow the exclusion or limitation of incidental or consequential damages in which case, the above limitations may not apply. In the event of a dispute as to whether a product defect exists, ACCOR shall have the right to have the valve inspected by a third-party inspector at ACCOR's expense. In such case, the consumer shall produce the valve within 20 days of written request from ACCOR. Failure to do so shall void any warranty.

ACCOR assumes no responsibility for any failure of the valve due to faulty installation, abuse, unreasonable stress condition, excessive water hammer, over torque, damaged, defective or out of spec pipe, or exposure to freezing conditions, excessive heat and/or corrosive chemicals and/or other destructive materials.

The Warranty specified above is an exclusive warranty of ACCOR Technology, Inc. pertaining to FlowTite® supply stop valves and is in lieu of all other warranties including the implied warranties of merchantability of fitness for a particular purpose.

The warranty gives you specific legal rights and you may also have other rights which vary from state to state.



ACCOR Technology, Inc. 3310 SE 5th Street, East Wenatchee, WA 98802 1-800-447-5848

ACCOR® Technology, Inc.
3310 5th Street SE
East Wenatchee, WA 98802
(800) 447-5848 Toll Free
(509) 888-2233 Local
(509) 888-0554 FAX

INNOVATING SINCE 1988



www.accortechnology.com

1-800-447-5848





INNOVATING SINCE 1988

ACCOR[®]
TECHNOLOGY



www.accortechnology.com

(800) 447-5848

3310 5th St SE, East Wenatchee, WA 98802



LIT-187